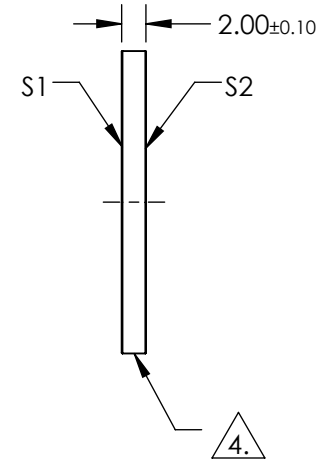
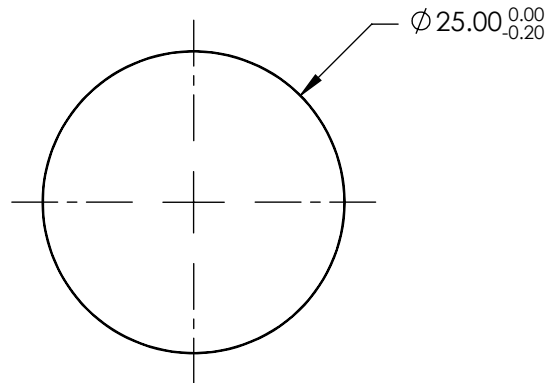


NOTES:

1. SUBSTRATE:  
UV GRADE FUSED SILICA
2. COATING (APPLY ACROSS COATING APERTURE):  
S1 & S2: UV-AR (250-425nm)  
R(ABS) ≤1.0% @ 250 - 425nm  
R(AVG) ≤0.75% @ 250 - 425nm  
R(AVG) ≤0.5% @ 370 - 420nm
3. SURFACE S2 TO BE PARALLEL TO SURFACE S1 TO WITHIN <5 ARCSEC

△ 4. FINE GRIND SURFACE

5. ROHS COMPLIANT

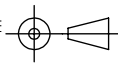


**FOR INFORMATION ONLY:  
DO NOT MANUFACTURE  
PARTS TO THIS DRAWING**

SPECIFICATIONS SUBJECT TO CHANGE WITHOUT NOTICE  
DIMENSIONS ARE FOR REFERENCE ONLY

**EO**® Edmund Optics®

	S1	S2
SHAPE	PLANO	PLANO
SURFACE QUALITY	20-10	20-10
CLEAR APERTURE	$\varnothing 20.00$	$\varnothing 20.00$
BEVEL	PROTECTIVE AS NEEDED	PROTECTIVE AS NEEDED

THIRD ANGLE PROJECTION 

ALL DIMS IN mm

TITLE	25mm Dia., 2mm Thick, UV-AR Coated $\lambda/10$ Fused Silica Window		
DWG NO	11880	SHEET	1 OF 1