

NOTES:

1. SUBSTRATE:  
SAPPHIRE (AL2O3)
2. SURFACE S2 TO BE PARALLEL WITH SURFACE S1 TO WITHIN  $\leq 3.5$  ARCMIN
3. COATING (APPLY ACROSS CLEAR APERTURE)

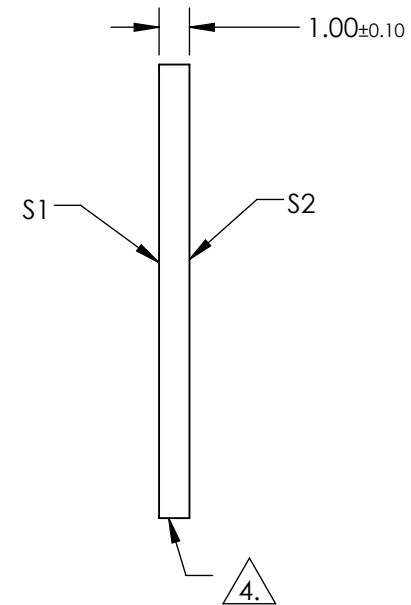
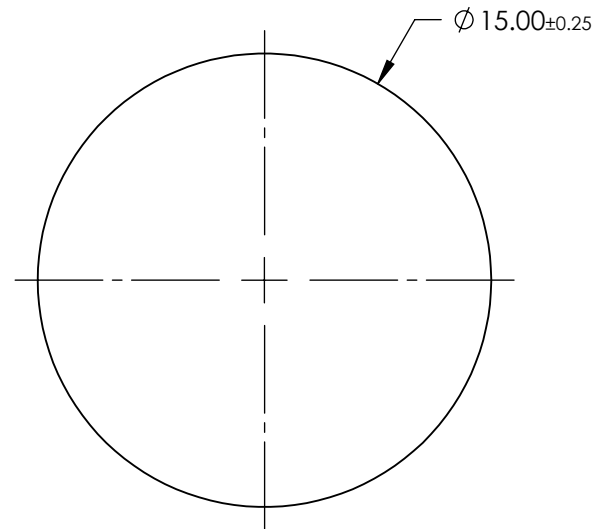
S1 & S2: R(ABS)  $\leq 1.5\%$  @ 750 - 800nm  
 R(ABS)  $\leq 1.0\%$  @ 800 - 1550nm  
 R(AVG)avg  $\leq 0.7\%$  @ 750 - 1550nm



FINE GRIND SURFACE

5. ROHS COMPLIANT

**FOR INFORMATION ONLY:  
DO NOT MANUFACTURE  
PARTS TO THIS DRAWING**



SPECIFICATIONS SUBJECT TO CHANGE WITHOUT NOTICE  
 DIMENSIONS ARE FOR REFERENCE ONLY

	S1	S2
SHAPE	PLANO	PLANO
CLEAR APERTURE	Ø13.50	Ø13.50
SURFACE FLATNESS	2λ	2λ
SURFACE QUALITY	80-50	80-50
BIREFRINGENCE (n <sub>o</sub> -n <sub>e</sub> )	0.008	0.008
BEVEL	PROTECTIVE AS NEEDED	PROTECTIVE AS NEEDED



ALL DIMS IN

mm



**Edmund Optics®**

TITLE

15mm Dia., 1mm Thick, NIR II AR Coated  
Sapphire Window

DWG NO

20939

SHEET  
1 OF 1