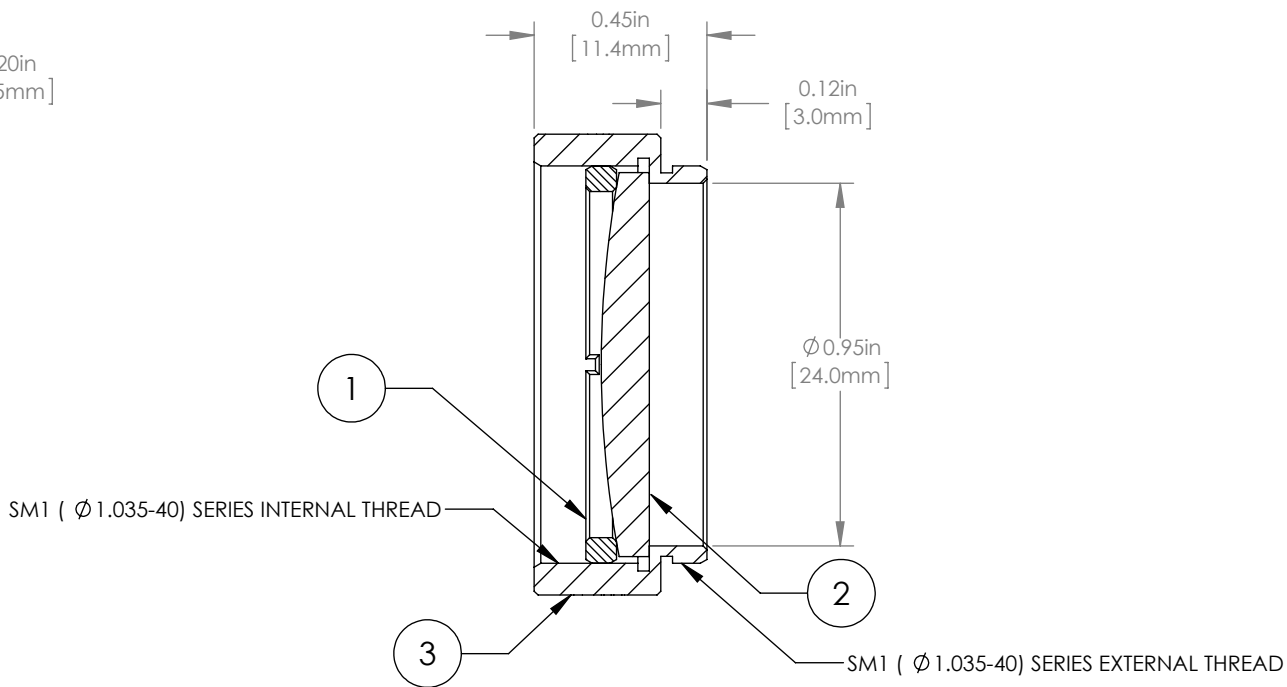
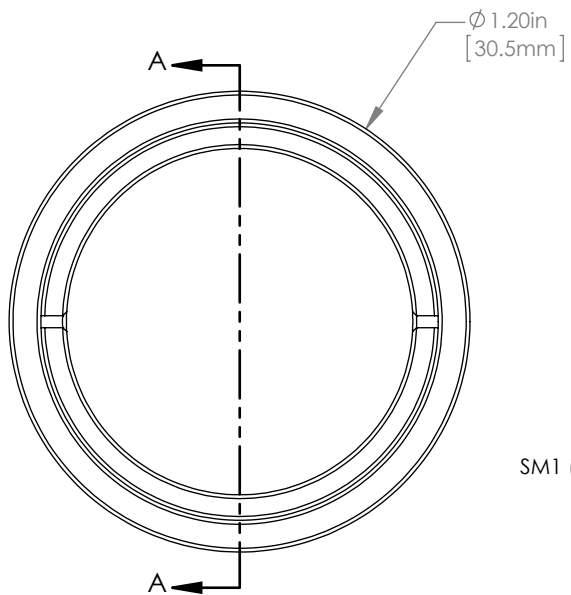


	PART DESCRIPTION	MATERIAL
①	SM1RR	ANODIZED ALUMINUM
②	LA4874	UV FUSED SILICA
③	ENGRAVED HOUSING	ANODIZED ALUMINUM



NOTES/SPECIFICATIONS:

1. DESIGN WAVELENGTH: 546nm
2. FOCAL LENGTH:  $f=150.0\text{mm} \pm 1\%$
3. WORKING DISTANCE (REF): 144.0mm
4. CLEAR APERTURE:  $> \text{Ø} 22.86\text{mm}$
5. SURFACE QUALITY: 40-20 SCRATCH-DIG

FOR INFORMATION ONLY  
NOT FOR MANUFACTURING PURPOSES

DRAWING PROJECTION			<b>THORLABS</b> www.thorlabs.com <b>Ø 1" MOUNTED PLANO-CONVEX LENS, f=150mm</b>	
NAME	DATE			
DRAWN	GG	13/OCT/15	MATERIAL <b>SEE TABLE</b>	
APPROVAL	DD	13/OCT/15		
COPYRIGHT © 2015 BY THORLABS VALUES IN PARENTHESIS ARE CALCULATED AND MAY CONTAIN ROUND OFF ERRORS			ITEM #	APPROX WEIGHT
			LA4874-ML	9 g