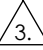
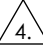
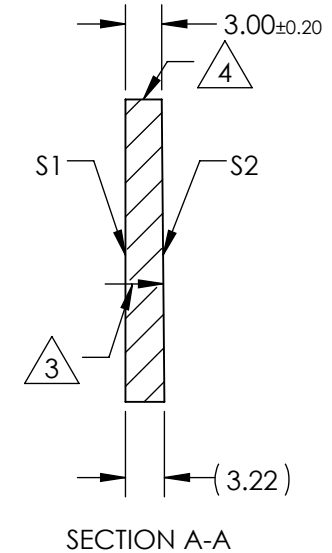
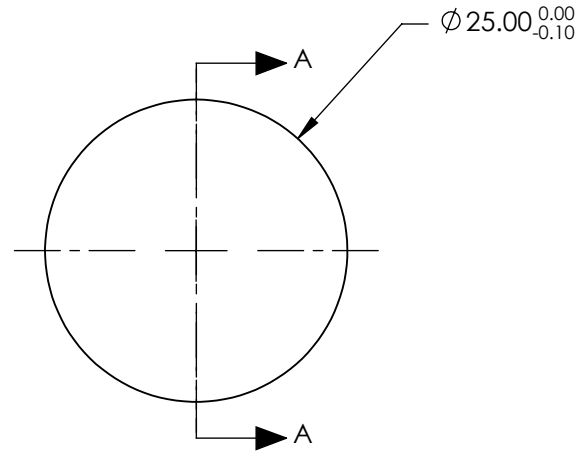


NOTES:

1. SUBSTRATE MATERIAL:
Fused Silica (Corning 7980)
2. COATING (APPLY ACROSS CLEAR APERTURE)
S1 & S2: Rabs $\leq 1.0\%$ @ 350 - 450nm
Ravg $\leq 1.5\%$ @ 250 - 700nm
3.  ARROW POINTS TOWARDS TILTED SURFACE
4.  FINE GROUND SURFACE
5. POWER, IRREGULARITY, AND SURFACE QUALITY SPECIFICATIONS APPLY ACROSS CLEAR APERTURE
6. RoHS COMPLIANT

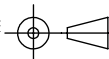


**FOR INFORMATION ONLY:
DO NOT MANUFACTURE
PARTS TO THIS DRAWING**

SPECIFICATIONS SUBJECT TO CHANGE WITHOUT NOTICE
DIMENSIONS ARE FOR REFERENCE ONLY

	S1	S2
SHAPE	PLANO	PLANO
RADIUS	∞	∞
MIN CLEAR APERTURE	$\varnothing 22.50$	$\varnothing 22.50$
SURFACE QUALITY	20-10	20-10
SURFACE ACCURACY	$\lambda/10$	$\lambda/10$
BEVEL	PROTECTIVE AS NEEDED	PROTECTIVE AS NEEDED

THIRD ANGLE PROJECTION



ALL DIMS IN

mm

 **Edmund Optics®**

TITLE

25mm Dia., UV-VIS Coated, Fused Silica
Wedged Window

DWG NO

17664

SHEET
1 OF 1