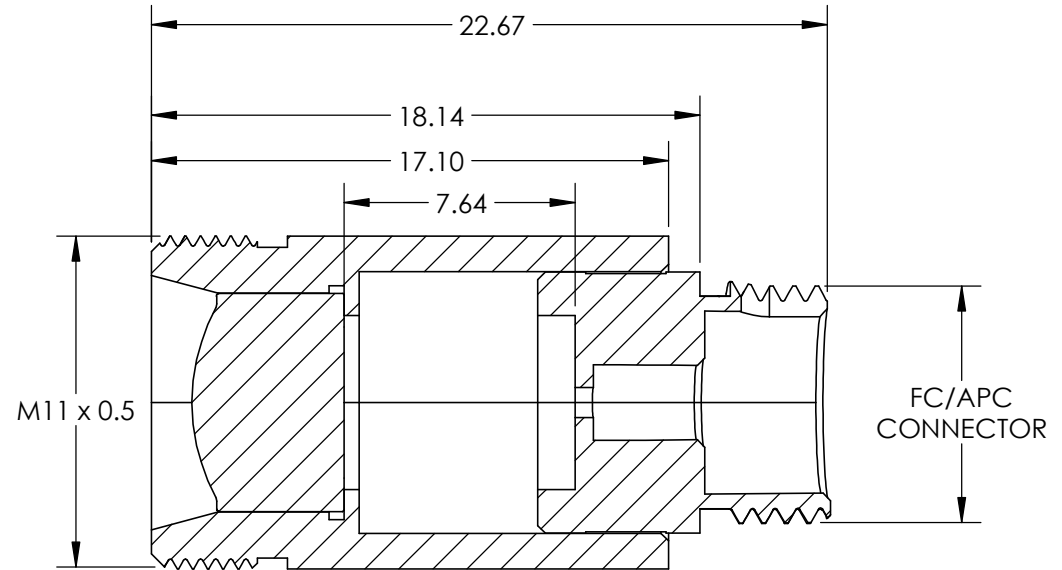
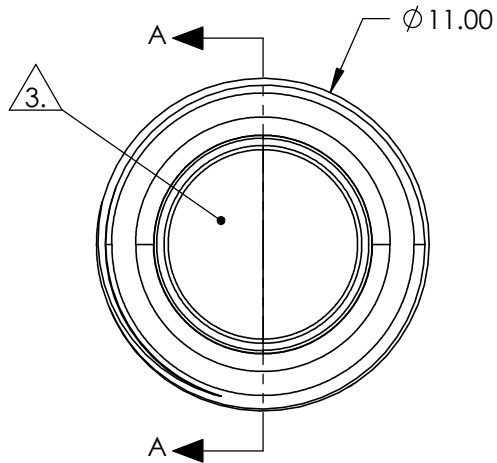
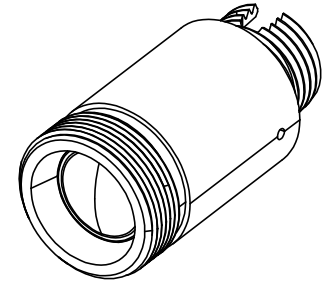


NOTES:

1. MATERIAL
HOUSING: STAINLESS STEEL
LENS: D-ZK3
2. COATING
S1 & S2: R(ABS) <1.0% @ 1050 - 1600nm
3. CLEAR APERTURE: 5.50mm
4. ALIGNMENT WAVELENGTH: 1064nm
5. RoHS: COMPLIANT



SECTION A-A

SPECIFICATIONS SUBJECT TO CHANGE WITHOUT NOTICE
DIMENSIONS ARE FOR REFERENCE ONLY

EO® Edmund Optics®

**FOR INFORMATION ONLY:
DO NOT MANUFACTURE
PARTS TO THIS DRAWING**

THIRD ANGLE PROJECTION		TITLE	LightPath 354220 1064nm Alignment, 0.25 NA Fiber Collimator w/ FC/APC Connector	
ALL DIMS IN	mm	DWG NO	16707	SHEET 1 OF 1