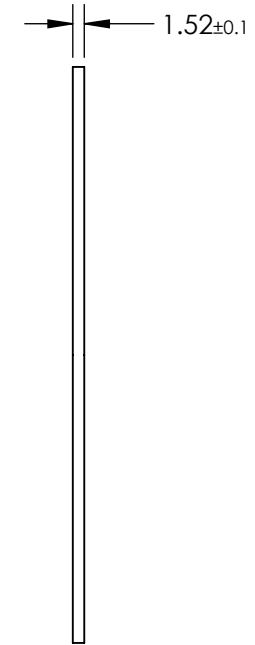
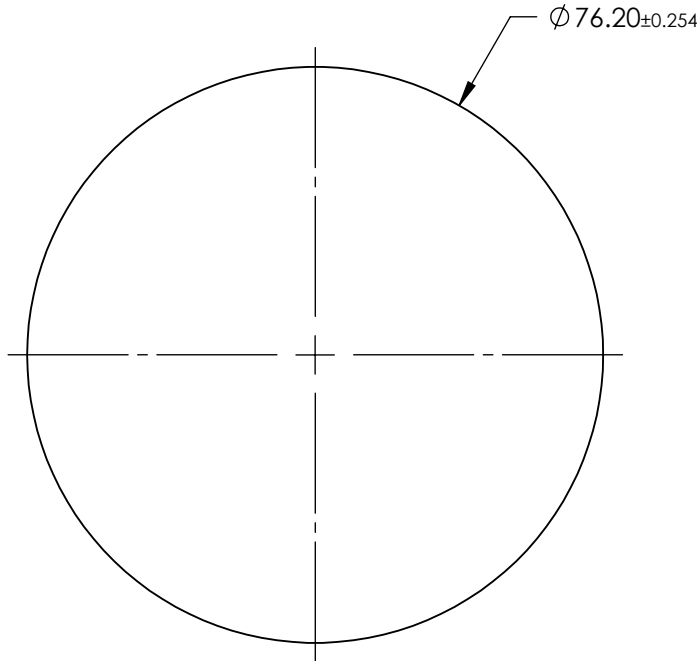


NOTES:

- 1. SUBSTRATE: Polycarbonate
- 2. COATING (APPLY ACROSS CLEAR APERTURE)
  - S1 & S2: BBAR (400-1000nm)
  - R(AVG) ≤ 1.25% @ 400 - 1000nm
- 3. ROHS COMPLIANT



**FOR INFORMATION ONLY:  
DO NOT MANUFACTURE  
PARTS TO THIS DRAWING**

SPECIFICATIONS SUBJECT TO CHANGE WITHOUT NOTICE  
DIMENSIONS ARE FOR REFERENCE ONLY

**EO**® Edmund Optics®

	S1	S2
SHAPE	PLANO	PLANO
CLEAR APERTURE	Ø 68.58	Ø 68.58
BEVEL	PROTECTED AS NEEDED	PROTECTED AS NEEDED



THIRD ANGLE PROJECTION  
ALL DIMS IN mm

TITLE	3" Diameter, BBAR (400-1000nm) Coated, Plastic Polycarbonate Window	
DWG NO	21354	SHEET 1 OF 1