

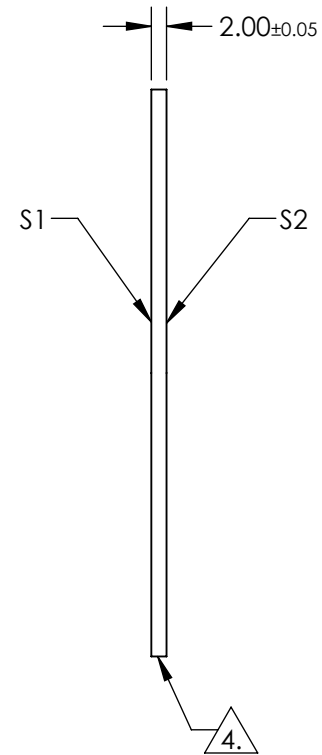
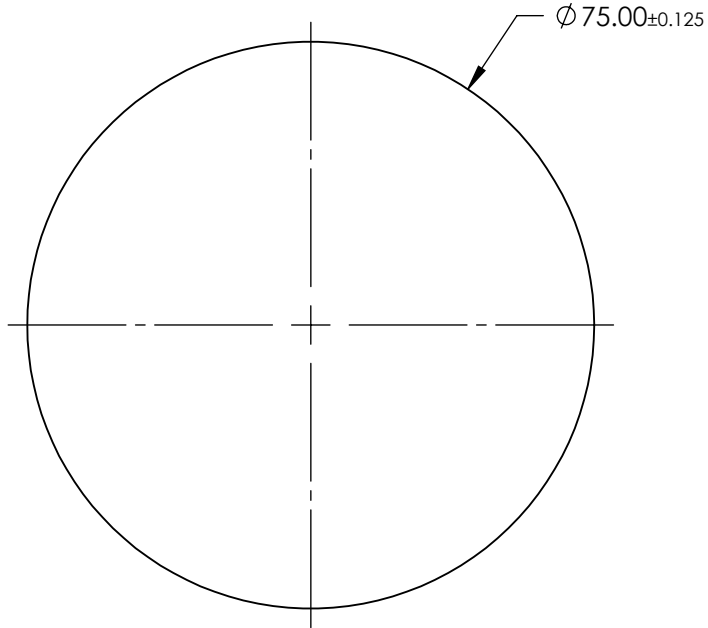
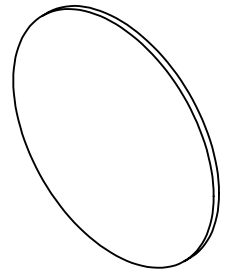
NOTES:

1. SUBSTRATE: Sapphire (Al_2O_3)
2. SURFACE S1 TO BE PARALLEL WITH SURFACE S2 TO WITHIN ≤ 3.5 ARCMIN
3. COATING (APPLY ACROSS CLEAR APERTURE)

S1 & S2: R(AVG) $\leq 0.25\%$ @ 880nm
 R(AVG) $\leq 1.25\%$ @ 400 - 870nm
 R(AVG) $\leq 1.25\%$ @ 890 - 1000nm

4. FINE GRIND SURFACE

5. ROHS COMPLIANT



**FOR INFORMATION ONLY:
 DO NOT MANUFACTURE
 PARTS TO THIS DRAWING**

SPECIFICATIONS SUBJECT TO CHANGE WITHOUT NOTICE
 DIMENSIONS ARE FOR REFERENCE ONLY

	S1	S2
SHAPE	PLANO	PLANO
SURFACE QUALITY	80-50	80-50
CLEAR APERTURE	Ø 67.50	Ø 67.50
SURFACE FLATNESS	2λ (typical)	2λ (typical)
BEVEL	PROTECTED AS NEEDED	PROTECTED AS NEEDED



ALL DIMS IN mm

EO® Edmund Optics®

TITLE

75mm Diameter, VIS-NIR AR Coated Sapphire Window

DWG NO

18948

SHEET
1 OF 1