

NOTES:

1. COATING (APPLY ACROSS COATING APERTURE)

SPECIFICATIONS AT 45° AOI AND RANDOM POLARIZATION

S1: R(abs): = 50.0% ± 5.0% @ 550nm
 R(abs): = 50.0% ± 10.0% @ 400 - 700nm
 T(abs): = 50.0% ± 5.0% @ 550nm
 T(abs): = 50.0% ± 10.0% @ 400 - 700nm

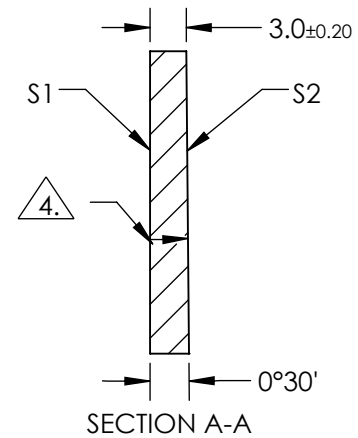
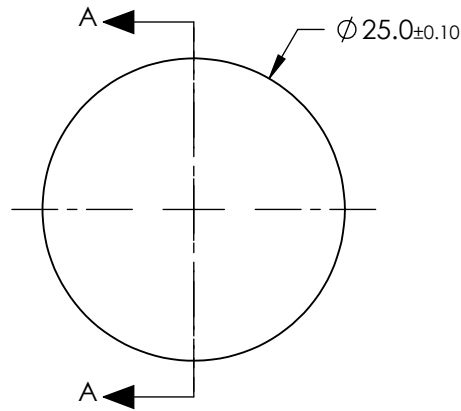
S2: R(abs): ≤ 2.0% @ 400 - 700nm
 R(avg): ≤ 1.0% @ 400 - 700nm

2. SURFACE QUALITY SPECIFICATIONS APPLY ACROSS COATING APERTURES

3. RoHS COMPLIANT

4. ARROW ON EDGE OF PART INDICATES ANTI-REFLECTION COATED SIDE S2.

**FOR INFORMATION ONLY:
 DO NOT MANUFACTURE
 PARTS TO THIS DRAWING**



SPECIFICATIONS SUBJECT TO CHANGE WITHOUT NOTICE
 DIMENSIONS ARE FOR REFERENCE ONLY

	S1	S2
SURFACE QUALITY	20 - 10	20 - 10
SURFACE FLATNESS	$\lambda/10$	$\lambda/10$
MINIMUM COATING APERTURE	$\phi 21.25$	$\phi 21.25$
BEVEL	PROTECTIVE AS NEEDED	PROTECTIVE AS NEEDED



ALL DIMS IN

mm

EO® Edmund Optics®

TITLE	25mm DIAMETER 50R/50T, VIS WEDGED PLATE BEAMSPLITTER	
DWG NO.	34413	SHEET 1 OF 1