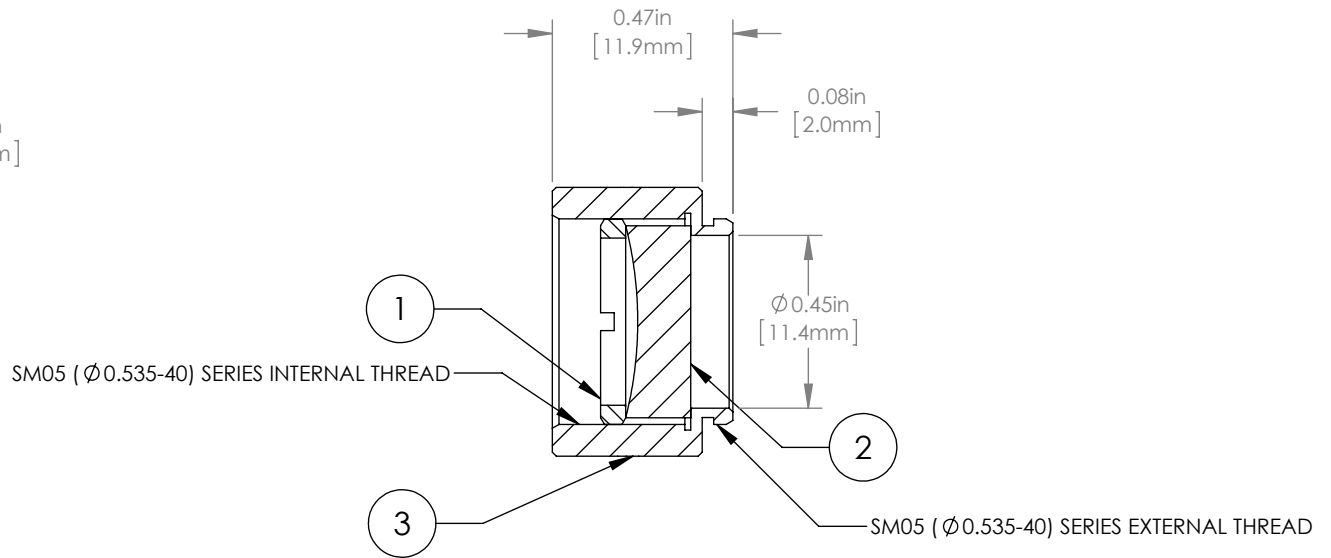
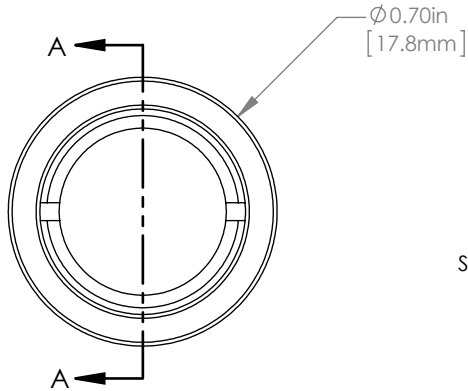
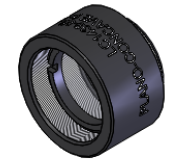


	PART DESCRIPTION	MATERIAL
①	SM05RR	ANODIZED ALUMINUM
②	LC1439	N-BK7
③	ENGRAVED HOUSING	ANODIZED ALUMINUM



NOTES/SPECIFICATIONS:

- DESIGN WAVELENGTH: 633nm
- FOCAL LENGTH: $f=-50.0\text{mm} \pm 1\%$
- WORKING DISTANCE (REF): -43.2mm
- CLEAR APERTURE: $> \phi 11.0\text{mm}$
- SURFACE QUALITY: 40-20 SCRATCH-DIG

FOR INFORMATION ONLY
NOT FOR MANUFACTURING PURPOSES

DRAWING PROJECTION		THORLABS www.thorlabs.com	
NAME	DATE	$\phi 1/2$ " MOUNTED PLANO-CONCAVE LENS, $f=-50\text{mm}$	
DRAWN	20/NOV/15		
APPROVAL	DD	MATERIAL	REV
COPYRIGHT © 2015 BY THORLABS		SEE TABLE	A
VALUES IN PARENTHESIS ARE CALCULATED AND MAY CONTAIN ROUND OFF ERRORS		ITEM #	APPROX WEIGHT
		LC1439-ML	5 g