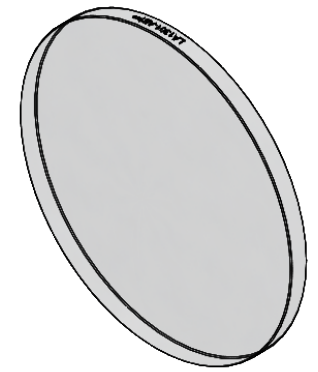


SECTION A-A
SCALE 1 : 1



NOTES/SPECIFICATIONS:

1. DESIGN WAVELENGTH: 587.6 nm
2. FOCAL LENGTH: $f=249.2 \text{ mm} \pm 1\%$
3. BACK FOCAL LENGTH(REF): $bf=245.5 \text{ mm}$
4. CLEAR APERTURE: $\varnothing 45.7 \text{ mm}$
5. SURFACE QUALITY: 40-20 SCRATCH-DIG
6. CENTRATION: $<3 \text{ arcmin}$
7. DIAMETER TOLERANCE: $+0.0/-0.1 \text{ mm}$
8. THICKNESS TOLERANCE: $\pm 0.1 \text{ mm}$
9. COATING: BBAR $R_{avg} < 1.0\%$ FROM 400 - 1100 nm, 0° AOI ON BOTH OPTICAL SURFACES

FOR INFORMATION ONLY
NOT FOR MANUFACTURING PURPOSES

DRAWING PROJECTION			THORLABS www.thorlabs.com $\varnothing 50.8 \text{ mm } f=250 \text{ mm PLANO CONVEX LENS -AB COAT}$	
NAME	DATE			
DRAWN	JB	10/16/2019	MATERIAL N-BK7	
APPROVAL	ST	10/21/2019		
COPYRIGHT © 2020 BY THORLABS			ITEM #	APPROX WEIGHT
VALUES IN PARENTHESIS ARE CALCULATED AND MAY CONTAIN ROUND OFF ERRORS			LA1301-AB	3 g
			REV	A