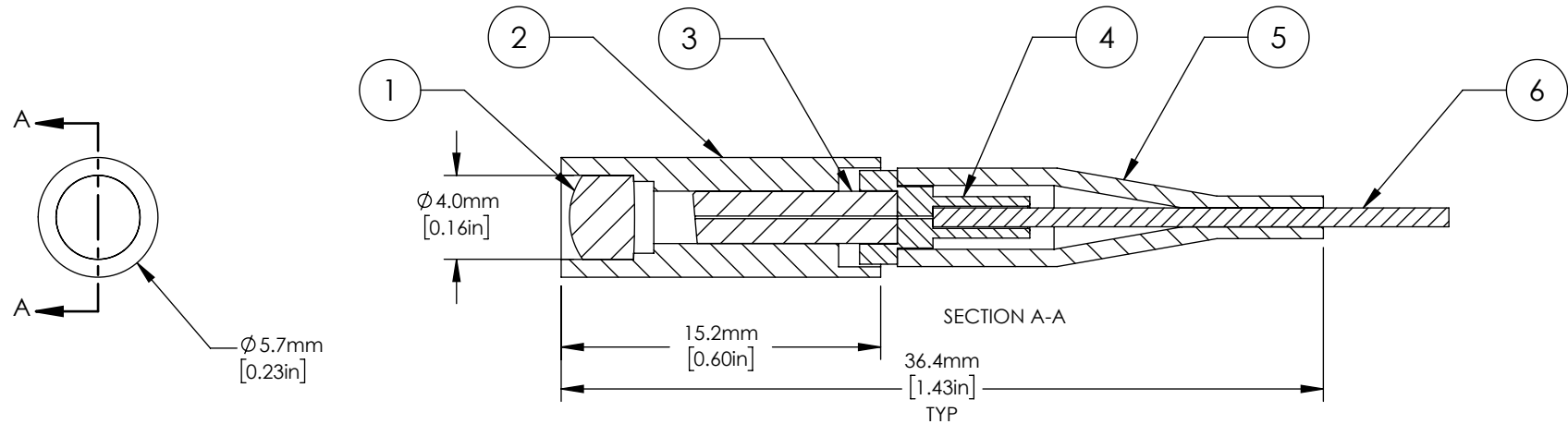
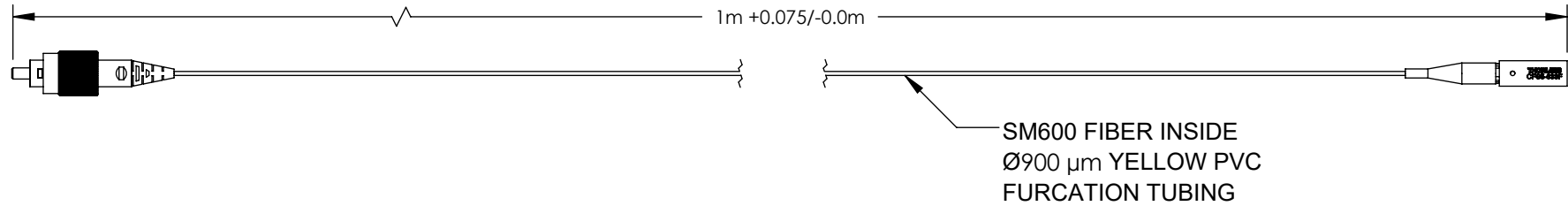


ITEM	PART	MATERIAL
1	Ø 4.0mm, f=4.59 LENS	MOLDED ASPHERE
2	LENS CELL	303 STAINLESS
3	FERRULE	ZIRCONIA
4	STEM	303 STAINLESS
5	STRAIN RELIEF BOOT	TPR
6	TUBING	HYTREL



NOTES/SPECIFICATIONS:

- DESIGN WAVELENGTH: 633 nm
- FULL ANGLE BEAM DIVERGENCE: 0.94 +0.17/-0.00 mrad
- 1/e<sup>2</sup> BEAM DIAMETER: 0.86 mm
- FIBER TYPE: SM600
- FIBER LENGTH: 1 m
- RETURN LOSS: ≥50 dB
- FIBER MODE FIELD DIAMETER: 4.3 µm
- CONNECTOR TYPE: FC/PC
- AR COATING (LENS): BBAR 600-1050 nm, Ravg < 0.5%
- AR COATING (FERRULE): BBAR 630-690 nm, Ravg < 0.25%

FOR INFORMATION ONLY  
NOT FOR MANUFACTURING PURPOSES

DRAWING PROJECTION			THORLABS	
	NAME	DATE	SM FIBER PIGTAILED ASPHERIC COLLIMATOR EFL = 4.59 mm, 633 nm, FC/PC	
DRAWN	DFS	27/JAN/21	REV B	
APPROVAL	BG	01/FEB/21	MATERIAL SEE TABLE	
COPYRIGHT © 2021 BY THORLABS			ITEM #	
VALUES IN PARENTHESIS ARE CALCULATED AND MAY CONTAIN ROUND OFF ERRORS			CFS5-633F	
			APPROX WEIGHT 7.7 g	