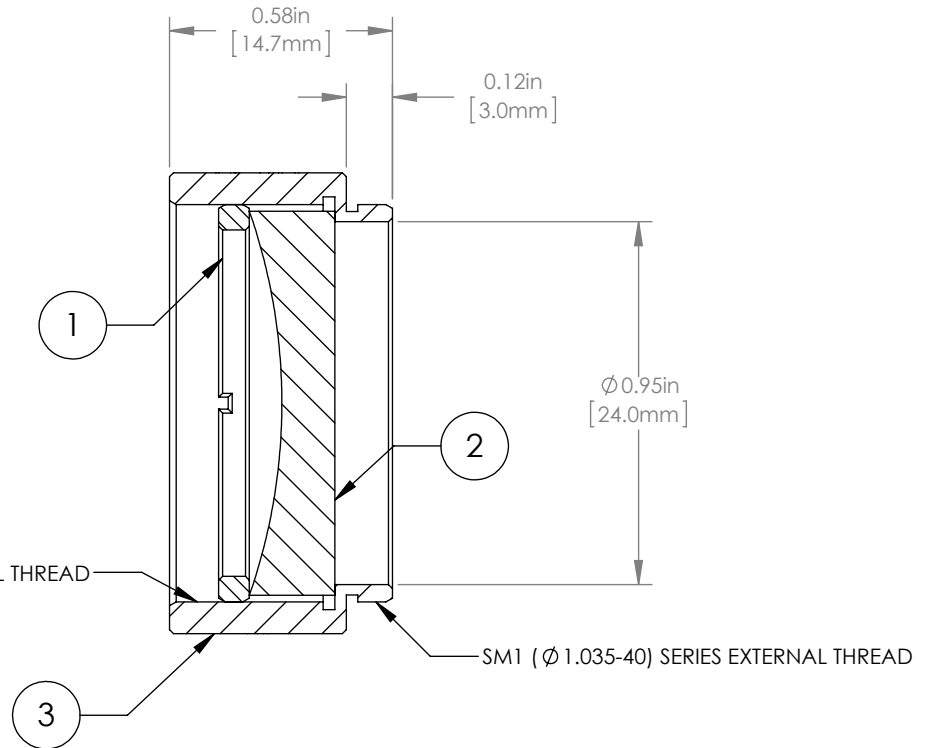
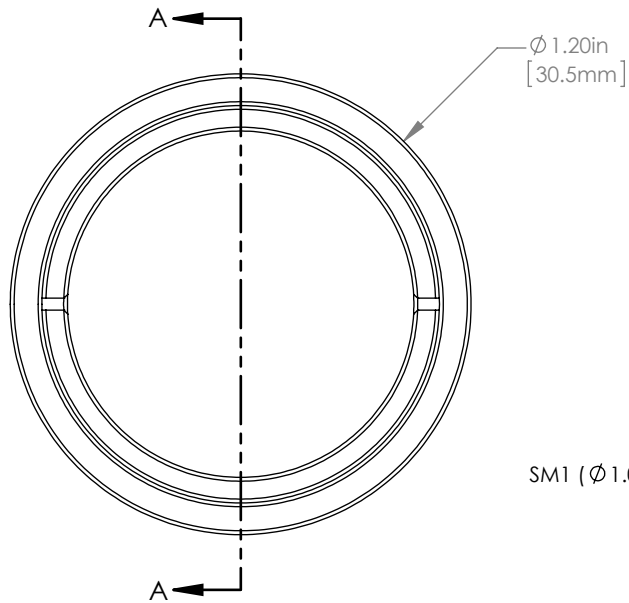


	PART DESCRIPTION	MATERIAL
①	SM1RR	ANODIZED ALUMINUM
②	LC1582-C	N-BK7
③	ENGRAVED HOUSING	ANODIZED ALUMINUM



NOTES/SPECIFICATIONS:

- DESIGN WAVELENGTH: 633nm
- FOCAL LENGTH: $f=-74.9\text{mm} \pm 1\%$
- WORKING DISTANCE (REF): -66.3mm
- CLEAR APERTURE: $> \varnothing 22.86\text{mm}$
- SURFACE QUALITY: 40-20 SCRATCH-DIG
- COATING: BBAR $R_{\text{avg}} < 0.5\%$ FROM 1050-1700nm, AOI: 0° , ON OUTER OPTICAL SURFACES

FOR INFORMATION ONLY
NOT FOR MANUFACTURING PURPOSES

DRAWING PROJECTION						THORLABS www.thorlabs.com	
NAME	DATE	$\varnothing 1"$ MOUNTED PLANO-CONCAVE LENS, $f=-75\text{mm}$, -C COATED				MATERIAL SEE TABLE REV A	
DRAWN	20/NOV/15						
APPROVAL	20/NOV/15	COPYRIGHT © 2015 BY THORLABS				ITEM # LC1582-C-ML APPROX WEIGHT 7 g	
VALUES IN PARENTHESIS ARE CALCULATED AND MAY CONTAIN ROUND OFF ERRORS							