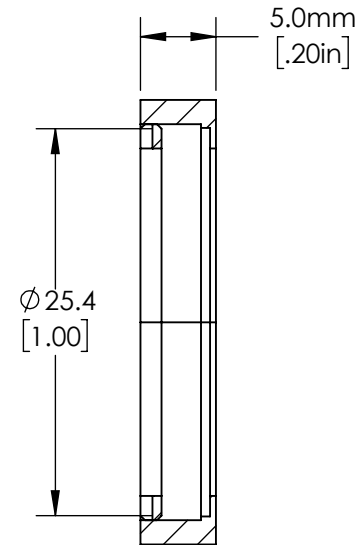
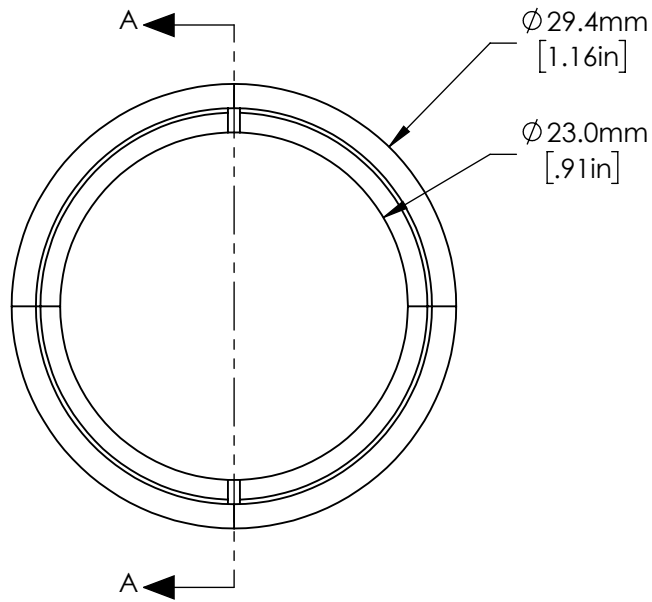
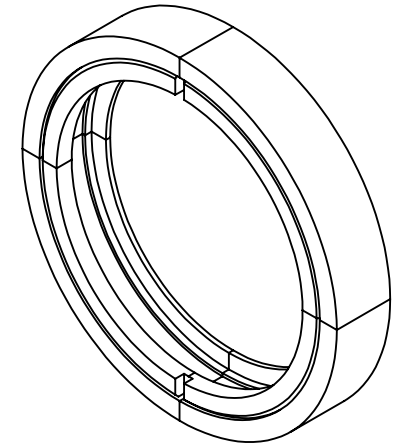


NOTES:

- 1. MATERIAL: BLACK ANODIZED ALUMINUM
- 2. ROHS COMPLIANT

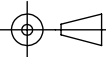


SECTION A-A

SPECIFICATIONS SUBJECT TO CHANGE WITHOUT NOTICE
DIMENSIONS ARE FOR REFERENCE ONLY

**FOR INFORMATION ONLY:
DO NOT MANUFACTURE
PARTS TO THIS DRAWING**



SIZE OF COMPATIBLE OPTICS (mm)		Ø 25.0/25.4		THIRD ANGLE PROJECTION 	TITLE	25/25.4mm, Mounting Cell		
MAXIMUM THICKNESS OF COMPATIBLE OPTICS (mm)		3.20			ALL DIMS IN	mm	DWG NO	56760