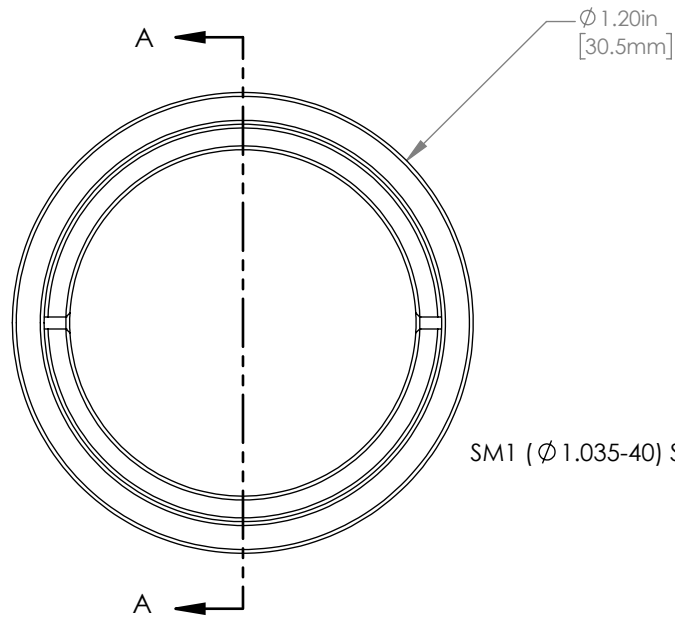
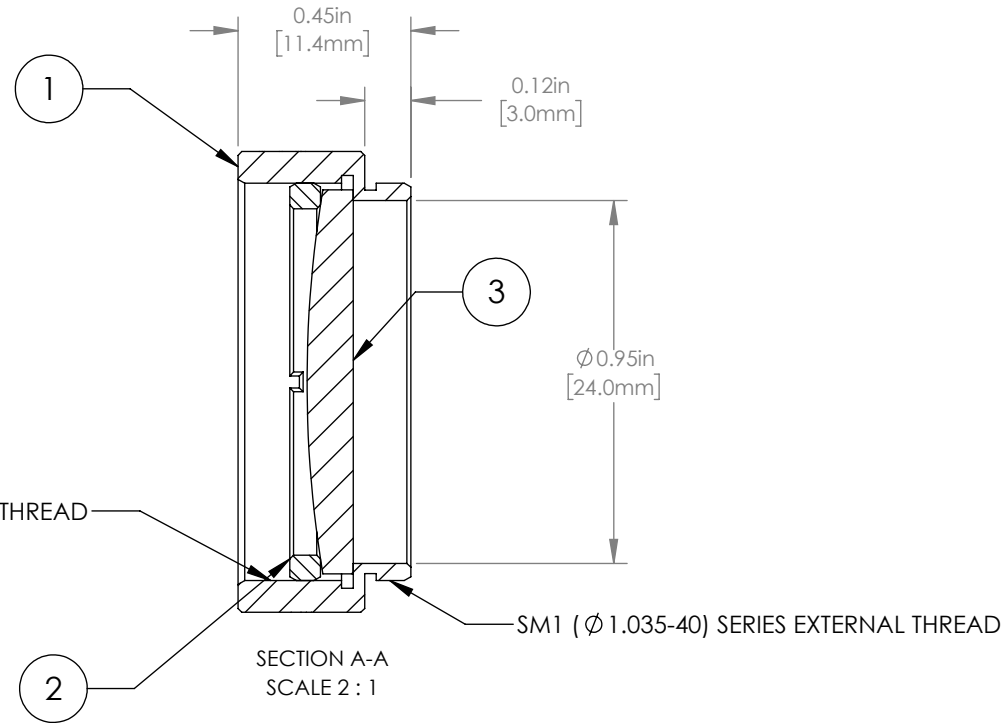


	PART DESCRIPTION	MATERIAL
①	ENGRAVED HOUSING	ANODIZED ALUMINUM
②	SM1RR	ANODIZED ALUMINUM
③	LA1433-B	N-BK7



SM1 ($\varnothing 1.035-40$) SERIES INTERNAL THREAD



NOTES/SPECIFICATIONS:

1. DESIGN WAVELENGTH: 587.6 nm
2. FOCAL LENGTH: $f=149.5\text{ mm} \pm 1\%$
3. WORKING DISTANCE: 143.7 mm
4. CLEAR APERTURE: $\varnothing 22.9\text{ mm}$
5. SURFACE QUALITY: 40-20 SCRATCH-DIG
6. COATING: BBAR 650-1050 nm, $R_{\text{avg}} < 0.5\%$, 0° AOI

FOR INFORMATION ONLY
NOT FOR MANUFACTURING PURPOSES

DRAWING PROJECTION			THORLABS www.thorlabs.com MOUNTED $\varnothing 25.4\text{ mm}$, $f = 150.0\text{ mm}$ PLANO CONVEX LENS, B COATED	
NAME	DATE			
DRAWN	GG	22/AUG/19	MATERIAL	
APPROVAL	DD	22/AUG/19	SEE TABLE	REV B
COPYRIGHT © 2019 BY THORLABS VALUES IN PARENTHESIS ARE CALCULATED AND MAY CONTAIN ROUND OFF ERRORS			ITEM #	APPROX WEIGHT
			LA1433-B-ML	9 g