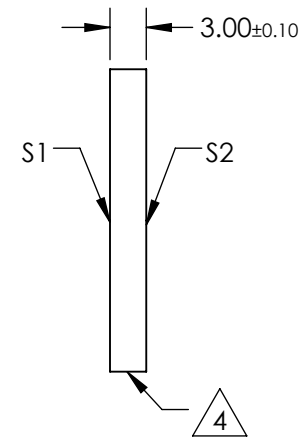
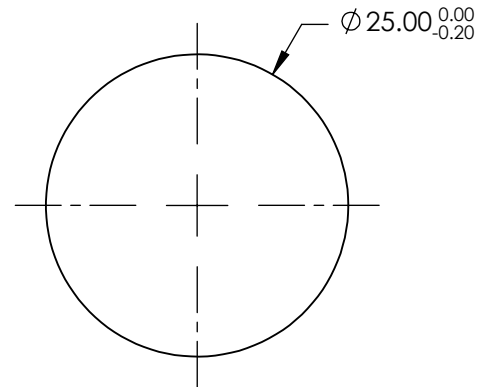
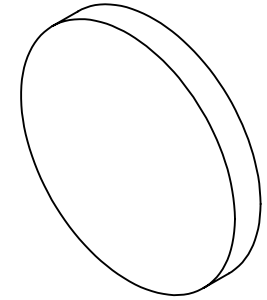


NOTES:

1. SUBSTRATE: UV GRADE FUSED SILICA
2. COATING (APPLY ACROSS CLEAR APERTURE)  
 S1 & S2: RABS  $\leq 1.0\%$  @ 250 - 425nm  
 RAVG  $\leq 0.75\%$  @ 250 - 425nm  
 RAVG  $\leq 0.5\%$  @ 370 - 420nm
3. SURFACE S2 TO BE PARALLEL WITH S1 TO  $< 5$  ARCSEC
4. FINE GRIND SURFACE
5. RoHS COMPLIANT



**FOR INFORMATION ONLY:  
DO NOT MANUFACTURE  
PARTS TO THIS DRAWING**

SPECIFICATIONS SUBJECT TO CHANGE WITHOUT NOTICE  
DIMENSIONS ARE FOR REFERENCE ONLY

**EO**® Edmund Optics®

	S1	S2
SHAPE	PLANO	PLANO
SURFACE QUALITY	20-10	20-10
CLEAR APERTURE	$\phi 20.00$	$\phi 20.00$
BEVEL	PROTECTIVE AS NEEDED	PROTECTIVE AS NEEDED

THIRD ANGLE PROJECTION

ALL DIMS IN mm

TITLE	25mm DIA., 3mm THICK, UV-AR COATED $\lambda/10$ FUSED SILICA WINDOW	
DWG NO	65875	SHEET 1 OF 1