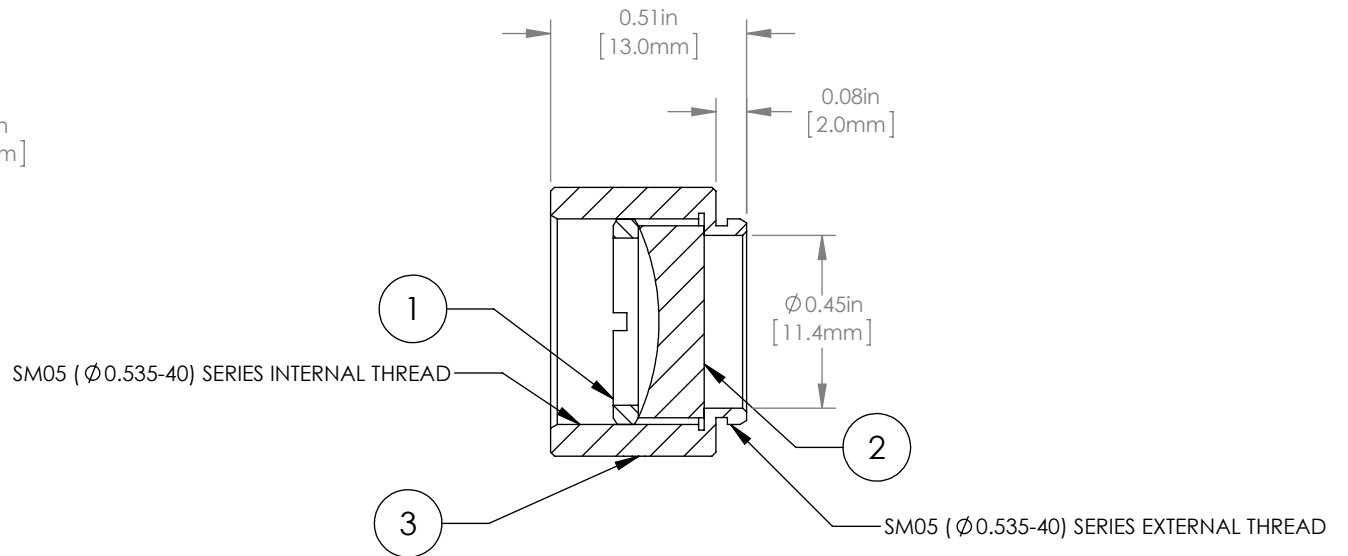
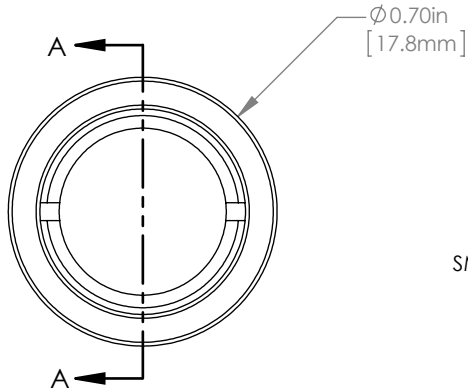
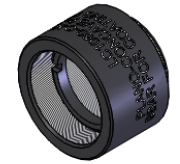


	PART DESCRIPTION	MATERIAL
①	SM05RR	ANODIZED ALUMINUM
②	LC1060-C	N-BK7
③	ENGRAVED HOUSING	ANODIZED ALUMINUM



NOTES/SPECIFICATIONS:

- DESIGN WAVELENGTH: 633nm
- FOCAL LENGTH:  $f = -30.0\text{mm} \pm 1\%$
- WORKING DISTANCE (REF): -21.7mm
- CLEAR APERTURE:  $> \phi 11.0\text{mm}$
- SURFACE QUALITY: 40-20 SCRATCH-DIG
- COATING: BBAR  $R_{\text{avg}} < 0.5\%$  FROM 1050-1700nm, AOI: 0°, ON OUTER OPTICAL SURFACES

FOR INFORMATION ONLY  
NOT FOR MANUFACTURING PURPOSES

DRAWING PROJECTION						<b>THORLABS</b> www.thorlabs.com	
NAME	DATE	$\phi 1/2"$ MOUNTED PLANO-CONCAVE LENS, $f = -30\text{mm}$ , -C COAT				REV A	
DRAWN	GG	20/NOV/15				MATERIAL	
APPROVAL	DD	20/NOV/15				SEE TABLE	
COPYRIGHT © 2015 BY THORLABS						ITEM #	
VALUES IN PARENTHESIS ARE CALCULATED AND MAY CONTAIN ROUND OFF ERRORS						LC1060-C-ML	
						APPROX WEIGHT	
						5 g	