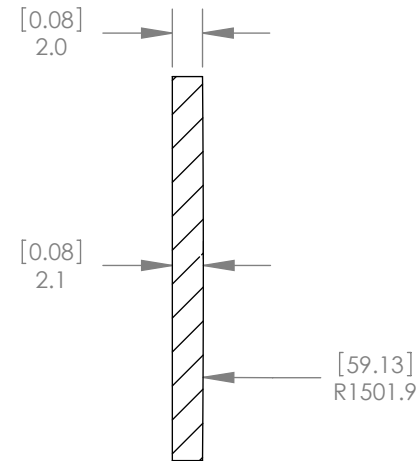
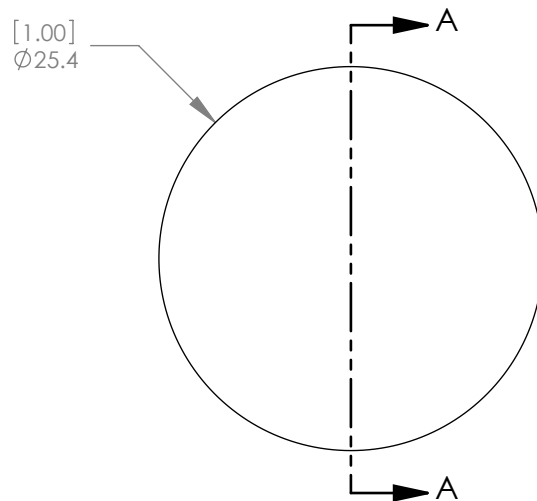




1:1 ISOMETRIC VIEW FOR REFERENCE ONLY



SECTION A-A

NOTES/SPECIFICATIONS:

DESIGN WAVELENGTH: 10.6µm
 FOCAL LENGTH: 500.00mm ± 1%
 BACK FOCAL LENGTH (REF): 499.49mm
 CLEAR APERTURE: >80%
 SURFACE QUALITY: 60-40 SCRATCH-DIG
 CENTRATION: <3 arcmin
 DIAMETER TOLERANCE: +0.0/-0.1mm
 THICKNESS TOLERANCE: ± 0.1mm
 COATING: BBAR Ravg <1.5% FROM 8µm-12µm,
 0° AOI, ON BOTH OPTICAL SURFACES

ALL DIMENSIONS ARE IN THE FORM $\frac{[in]}{mm}$.
 THIS DRAWING IS FOR INFORMATION ONLY
 NOT INTENDED FOR MANUFACTURING

THORLABS INC. PO BOX 366
 NEWTON NJ

	NAME	DATE
DRAWN	WD	8/27/2009
ENG APPR.	BW	9/03/2009
MFG APPR.	PM	9/08/2009

TITLE: Ge Plano-Convex Lens, f = 500.00 mm,
 DIA = 25.40 mm, BBAR: 8-12µm

PROPRIETARY AND CONFIDENTIAL
 THE INFORMATION CONTAINED IN THIS
 DRAWING IS THE SOLE PROPERTY OF
 THORLABS, INC. ANY REPRODUCTION
 IN PART OR AS A WHOLE WITHOUT
 THE WRITTEN PERMISSION OF
 THORLABS, INC. IS PROHIBITED.

MATERIAL: GERMANIUM	SIZE A	REV. A
SCALE: 2:1	SHEET 1 OF 1	
DWG. NO. 20110-E01	PART NO. LA9953-F	