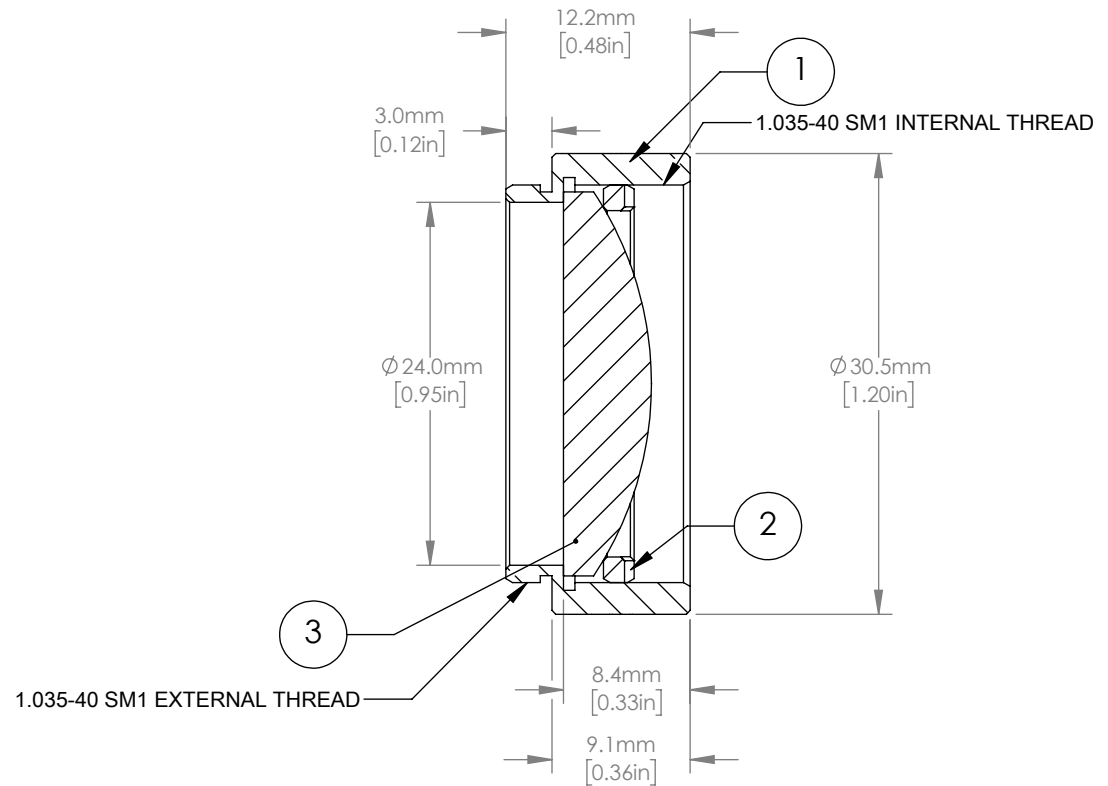
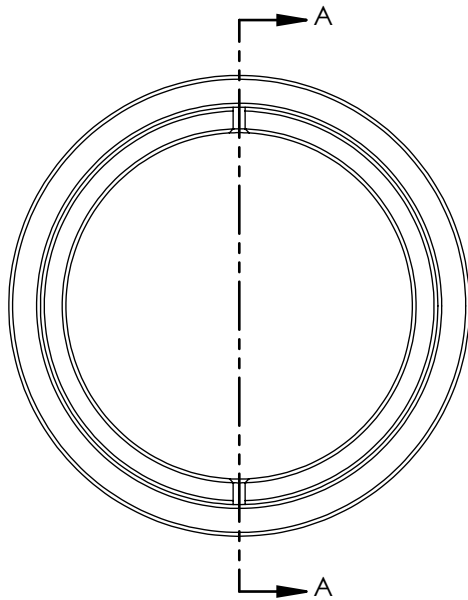


	PART DESCRIPTION	MATERIAL
①	ENGRAVED LENS TUBE	ANODIZED ALUMINUM
②	SM1RR	ANODIZED ALUMINUM
③	LA4148-UV	UV FUSED SILICA



SECTION A-A
SCALE 2 : 1

NOTES/SPECIFICATIONS:

- DESIGN WAVELENGTH: 587.6 nm
- FOCAL LENGTH: $f=50.0 \text{ mm} \pm 1\%$
- WORKING DISTANCE: 43.2 mm
- CLEAR APERTURE: >90% OF LENS DIAMETER
- SURFACE QUALITY: 40-20 SCRATCH-DIG
- AR COATING: 245- 400 nm $R_{avg} < 0.5\%$ AT 0 AOI

FOR INFORMATION ONLY
NOT FOR MANUFACTURING PURPOSES

DRAWING PROJECTION			THORLABS www.thorlabs.com	
NAME	DATE	f = 50.0 mm, Ø1", SM1-THREADED MOUNT, PLANO-CONVEX LENS, UV-COAT		
DRAWN	DFS	06/NOV/20	MATERIAL	
APPROVAL	BW	12/NOV/20	SEE TABLE	REV B
COPYRIGHT © 2020 BY THORLABS			ITEM #	APPROX WEIGHT
VALUES IN PARENTHESIS ARE CALCULATED AND MAY CONTAIN ROUND OFF ERRORS			LA4148-UV-ML	0.030 kg