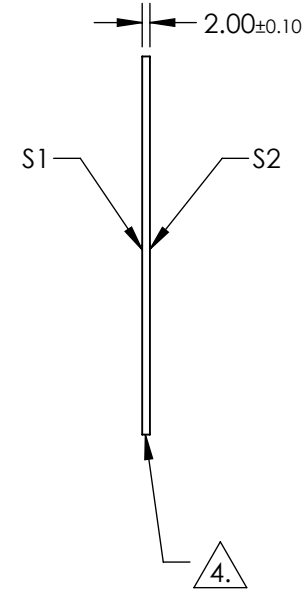
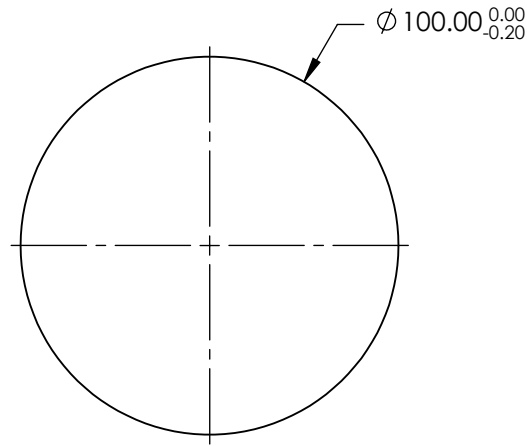
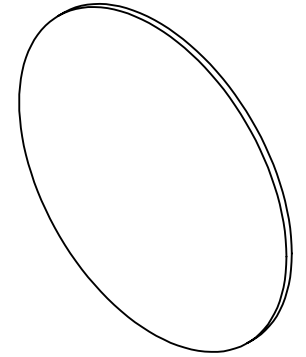


NOTES:

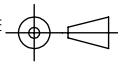
1. SUBSTRATE:
Fused Silica (Corning 7980)
2. S2 TO BE PARALLEL WITH S1 TO WITHIN <1' ARCMIN
3. COATING (APPLY ACROSS CLEAR APERTURE)
S1 & S2: R(ABS) $\leq 0.25\%$ @ 880nm
R(AVG) $\leq 1.25\%$ FROM 400 - 870nm
R(AVG) $\leq 1.25\%$ FROM 890 - 1000nm
4. FINE GRIND SURFACE
5. RoHS COMPLIANT



**FOR INFORMATION ONLY:
DO NOT MANUFACTURE
PARTS TO THIS DRAWING**

SPECIFICATIONS SUBJECT TO CHANGE WITHOUT NOTICE
DIMENSIONS ARE FOR REFERENCE ONLY

	S1	S2
SHAPE	PLANO	PLANO
SURFACE QUALITY	40-20	40-20
CLEAR APERTURE (mm)	Ø90.00	Ø90.00
BEVEL	PROTECTIVE AS NEEDED	PROTECTIVE AS NEEDED

THIRD ANGLE PROJECTION 

ALL DIMS IN mm

EO® Edmund Optics®

TITLE	100mm Dia., 2mm Thick, VIS-NIR Coated, $\lambda/4$ Fused Silica Window	
DWG NO	22061	SHEET 1 OF 1