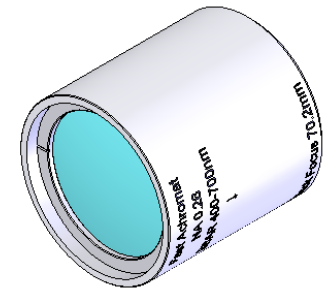
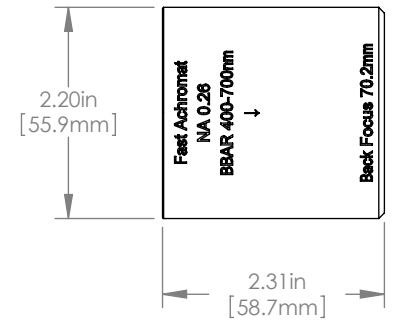
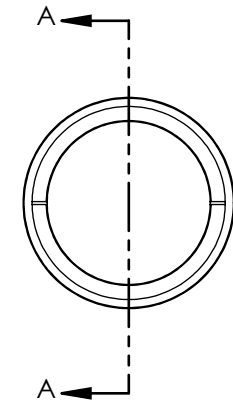
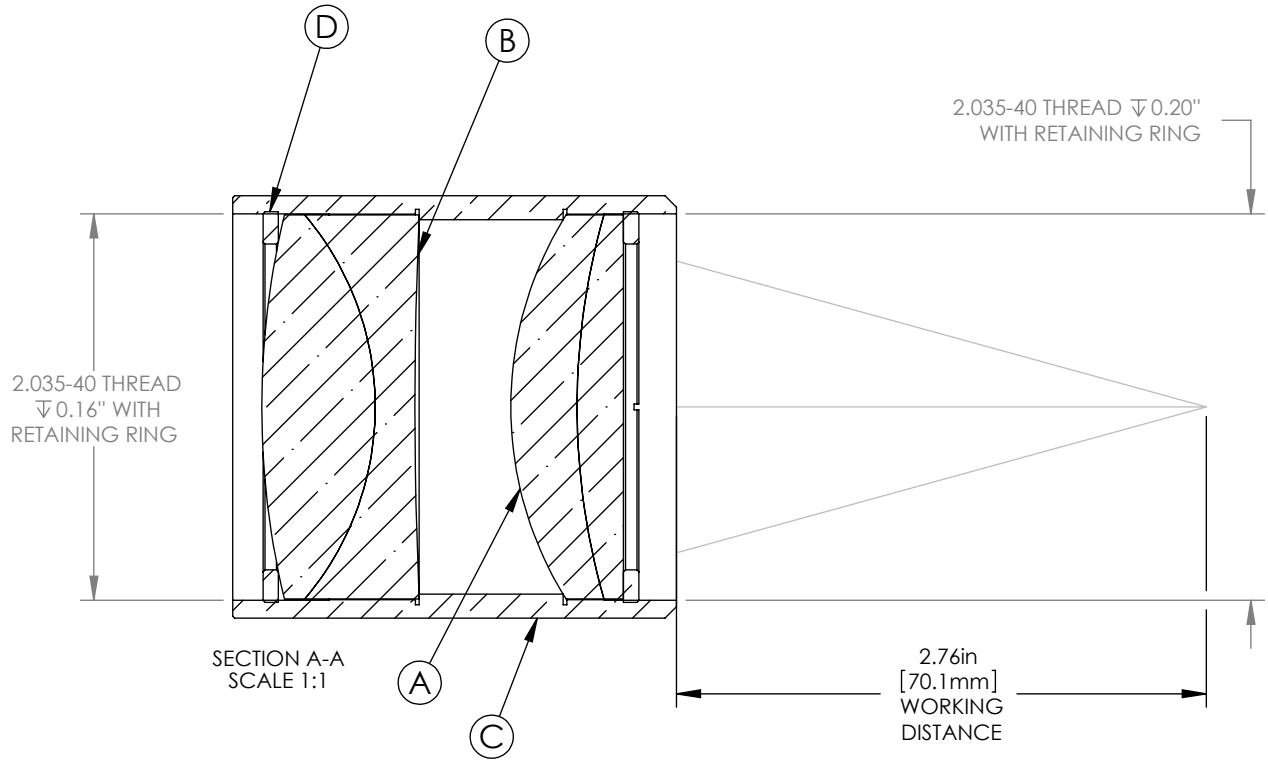


	ITEM	MATERIAL
(A)	DOUBLET 1	N-BK7 & N-SF2
(B)	DOUBLET 2	N-BK& & N-SF2
(C)	HOUSING	CHROME PLATED BRASS
(D)	RETAINING RING	CHROME PLATED BRASS



1:2 ISOMETRIC VIEW



- NOTES/SPECIFICATIONS:
- DESIGN WAVELENGTHS: 486.1nm, 587.6nm, 656.3nm
 - FOCAL LENGTH: 83.9mm
 - NUMERICAL APERTURE: 0.26
 - CLEAR APERTURE: 45.0mm
 - COATING: BBAR $R_{avg} < 0.5\%$ FROM 400-700nm

FOR INFORMATION ONLY
NOT FOR MANUFACTURING PURPOSES

DRAWING PROJECTION		THORLABS www.thorlabs.com	
NAME	DATE	FAST ACHROMATIC DOUBLET PAIR f=83.9mm BBAR 400-700nm	
DRAWN SFG	18/FEB/11	MATERIAL SEE TABLE	
APPROVAL PM	23/FEB/11	ITEM #	APPROX WEIGHT
COPYRIGHT © 2011 BY THORLABS		FAC2080-A	0.40 kg
VALUES IN PARENTHESIS ARE CALCULATED AND MAY CONTAIN ROUND OFF ERRORS			