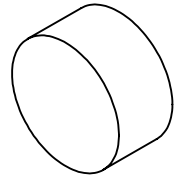


NOTES:

1. SUBSTRATE MATERIAL:
FUSED SILICA
2. SURFACE S2 TO BE PARALLEL TO SURFACE S1 <3 ARCMIN
3. COATING (APPLY ACROSS COATING APERTURE)
S1: DIELECTRIC
Rs>99.9% @500-540nm;
Rp>99.8% @505-530nm;
Rs>99.9% @1000-1070nm,
Rp>99.8% @1000-1070nm

S2: STRESS-COMPENSATING

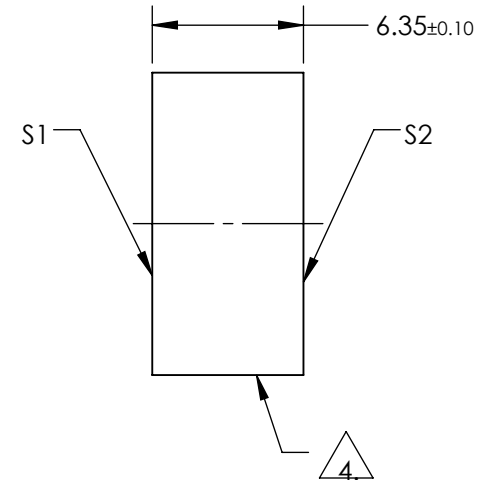
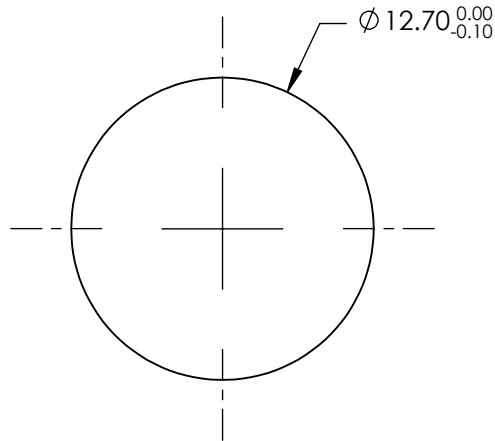
GROUP DELAY DISPERSION:
<35fs² @ 500 - 540nm (s-pol)
<50fs² @ 505 - 530nm (p-pol)
<20fs² @ 1000 - 1070nm (s-pol)
<40fs² @ 1000 - 1070nm (p-pol)



4. FINE GROUND SURFACE

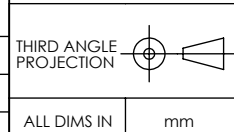
5. RoHS: COMPLIANT

**FOR INFORMATION ONLY:
DO NOT MANUFACTURE
PARTS TO THIS DRAWING**



SPECIFICATIONS SUBJECT TO CHANGE WITHOUT NOTICE
DIMENSIONS ARE FOR REFERENCE ONLY

	S1	S2
SHAPE	PLANO	PLANO
SURFACE FLATNESS	$\lambda/8$	N/A
SURFACE QUALITY	10-5	COMMERCIAL POLISH
CLEAR APERTURE (mm)	11.43	N/A
BEVEL	PROTECTIVE AS NEEDED	PROTECTIVE AS NEEDED



EO® Edmund Optics®

TITLE	515, 1030nm, 12.7mm Dia., Dual Band Low GDD Mirror	
DWG NO	17286	SHEET 1 OF 1