

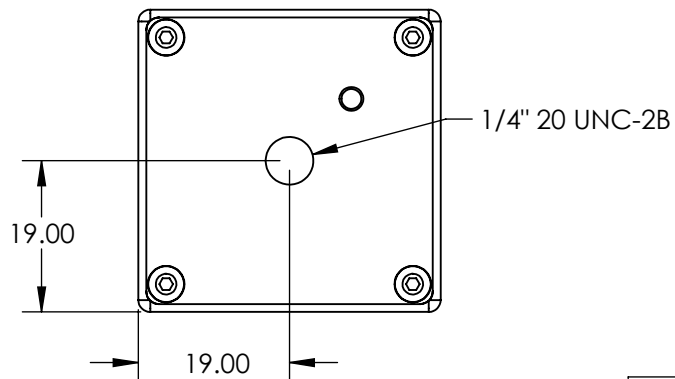
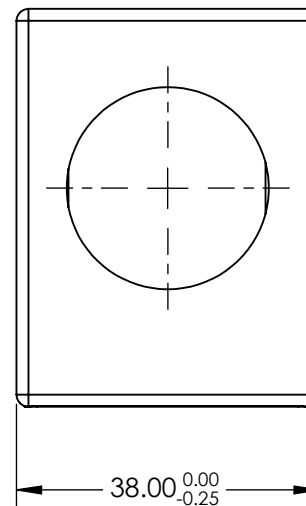
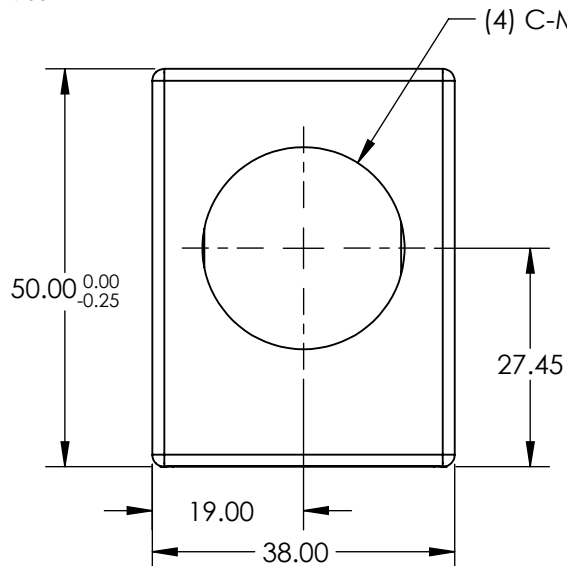
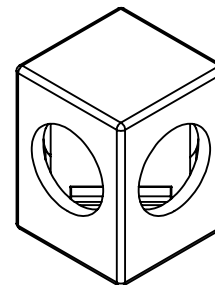
NOTES:

1. COATING (APPLY ACROSS CLEAR APERTURE)

S1: R(abs) 50% ±5% @ 550nm  
 R(abs) 50% ±10% @ 400 - 700 nm  
 T(abs) 50% ±5% @ 550nm  
 T(abs) 50% ±10% @ 400 - 700nm

S2: R(avg) <1.0% @ 400 - 700nm  
 R(abs) <2.0% @ 400 - 700nm

**FOR INFORMATION ONLY:  
 DO NOT MANUFACTURE  
 PARTS TO THIS DRAWING**



SPECIFICATIONS SUBJECT TO CHANGE WITHOUT NOTICE  
 DIMENSIONS ARE FOR REFERENCE ONLY



REV. A	S1	S2
SURFACE QUALITY	60-40	60-40
SURFACE FLATNESS	1λ	1λ

THIRD ANGLE PROJECTION

ALL DIMS IN mm

TITLE	50R/50T, VIS, C-MOUNTED PLATE BEAMSPLITTER	
DWG NO	49685	SHEET 1 OF 1