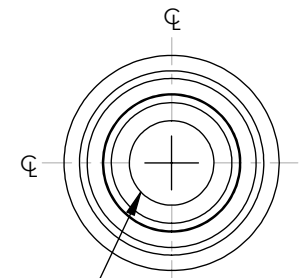


M4 x 0.25 INTERNAL THREAD $\nabla 0.20\text{in}$ [5.1mm]
 FOR USE WITH F4MSS(xx) SERIES HEX ADJUSTER
 (NOT INCLUDED)



FOR INFORMATION ONLY
 NOT FOR MANUFACTURING PURPOSES

DRAWING PROJECTION			THORLABS www.thorlabs.com	
NAME	DATE	M4 x 0.25 REMOVABLE ADJUSTER KNOB		
DRAWN MJM	01/FEB/19	MATERIAL	STAINLESS STEEL	
APPROVAL AK	04/FEB/19	ITEM #	F4MSSK1	APPROX WEIGHT 2.7 g
COPYRIGHT © 2019 BY THORLABS VALUES IN PARENTHESIS ARE CALCULATED AND MAY CONTAIN ROUND OFF ERRORS				
		REV	A	