

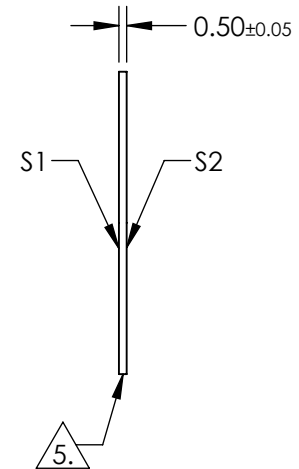
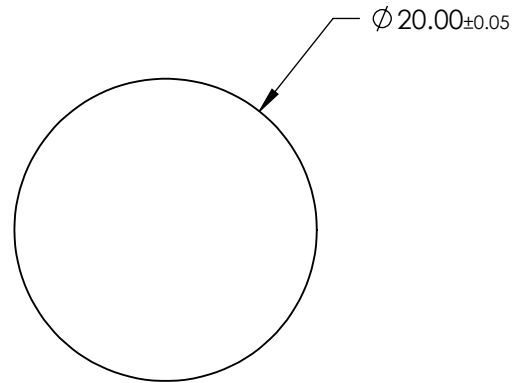
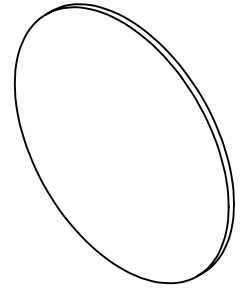
NOTES:

1. SUBSTRATE: SAPPHIRE (AL₂O₃)
2. SURFACE S1 TO BE PARALLEL WITH SURFACE S2 TO WITHIN ≤3.5 ARCMIN
3. ENVIRONMENTAL REQUIREMENTS:
 - S1 & S2: HIGH DURABILITY BBAR (2000-5000nm)
 - ADHESION: PER MIL-M-13508C PARA 4.4.6
 - ABRASION: SEVERE PER MIL-C-675C PARA 4.5.10
 - HUMIDITY: PER MIL-C-675C PARA 4.5.8
 - SALT SOLUBILITY: PER MIL-C-675C PARA 4.5.7
 - SALT SPRAY: PER MIL-C-675C PARA 4.5.9
 - TEMPERATURE CYCLE: PER MIL-M-13508C PARA 4.4.4
4. REFLECTION PERFORMANCE ACROSS CLEAR APERTURE ON CENTER

S1 & S2:
 R(AVG) <1.5% @ 2000 - 5000nm
 R(ABS) <2.0% @ 2000 - 5000nm

 5. FINE GRIND SURFACE

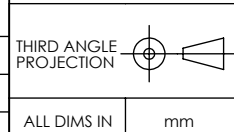
6. ROHS COMPLIANT



**FOR INFORMATION ONLY:
 DO NOT MANUFACTURE
 PARTS TO THIS DRAWING**

SPECIFICATIONS SUBJECT TO CHANGE WITHOUT NOTICE
 DIMENSIONS ARE FOR REFERENCE ONLY

	S1	S2
SHAPE	PLANO	PLANO
SURFACE QUALITY	80-50	80-50
CLEAR APERTURE	$\varnothing 18.00$	$\varnothing 18.00$
SURFACE FLATNESS	2λ (typical)	2λ (typical)
BEVEL	PROTECTED AS NEEDED	PROTECTED AS NEEDED



 **Edmund Optics®**

TITLE	20mm Dia., 0.5mm Thick, 2000-5000nm, High Durability AR Coated Sapphire Window		
DWG NO	18470	SHEET	1 OF 1