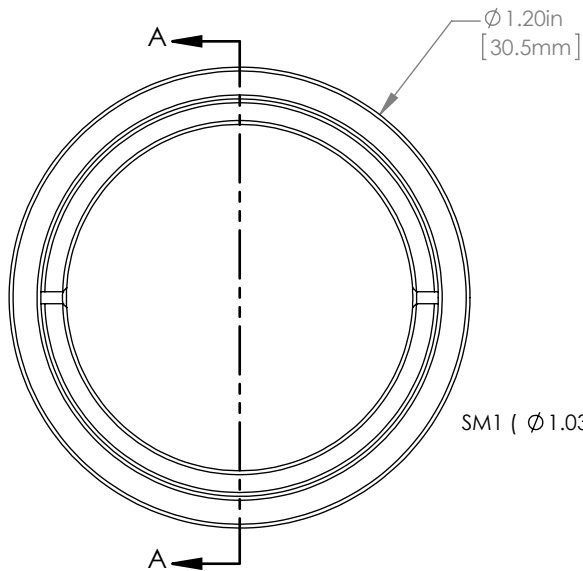
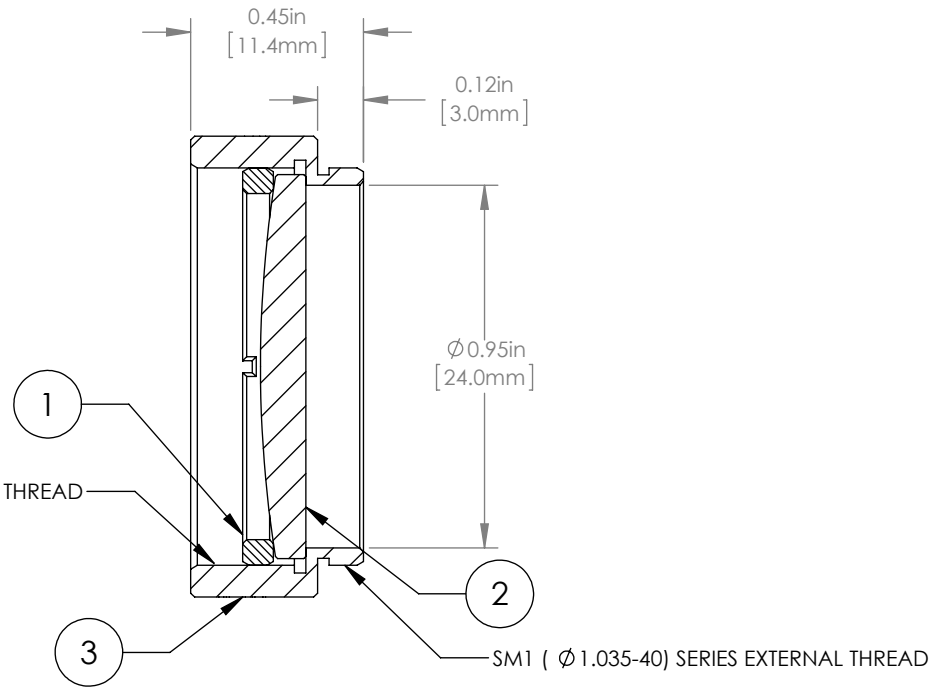


	PART DESCRIPTION	MATERIAL
①	SM1RR	ANODIZED ALUMINUM
②	LA4924-B	UV FUSED SILICA
③	ENGRAVED HOUSING	ANODIZED ALUMINUM



SM1 ($\phi 1.035\text{-}40$) SERIES INTERNAL THREAD



NOTES/SPECIFICATIONS:

- DESIGN WAVELENGTH: 546nm
- FOCAL LENGTH: $f=175.0\text{mm} \pm 1\%$
- WORKING DISTANCE (REF): 169.1mm
- CLEAR APERTURE: $> \phi 22.86\text{mm}$
- SURFACE QUALITY: 40-20 SCRATCH-DIG
- COATING: BBAR $R_{\text{avg}} < 0.5\%$ FROM 650-1050nm, AOI: 0°, ON OUTER OPTICAL SURFACES

FOR INFORMATION ONLY
NOT FOR MANUFACTURING PURPOSES

DRAWING PROJECTION			 www.thorlabs.com $\phi 1\text{'}$ MOUNTED PLANO-CONVEX LENS, $f=175\text{mm}$, -B COAT	
NAME	DATE			
DRAWN	GG	13/OCT/15	MATERIAL	
APPROVAL	DD	13/OCT/15		
COPYRIGHT © 2015 BY THORLABS			SEE TABLE	
VALUES IN PARENTHESIS ARE CALCULATED AND MAY CONTAIN ROUND OFF ERRORS			ITEM #	APPROX WEIGHT
			LA4924-B-ML	8 g

REV
A