

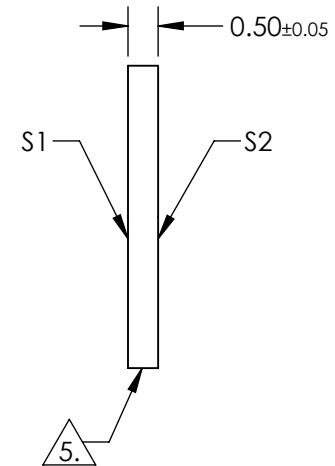
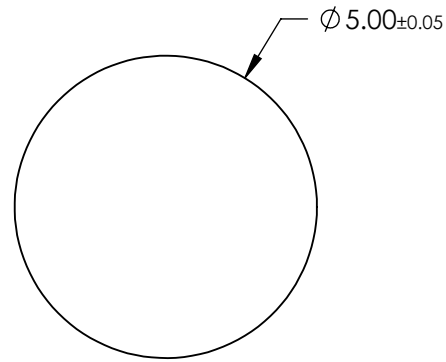
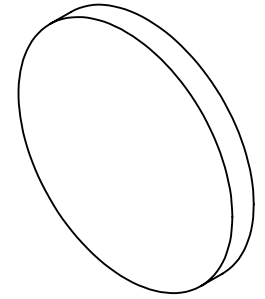
NOTES:

1. SUBSTRATE: SAPPHIRE (AL2O3)
2. SURFACE S1 TO BE PARALLEL WITH SURFACE S2 TO WITHIN ≤ 3.5 ARCMIN
3. ENVIRONMENTAL REQUIREMENTS:
 - S1 & S2: HIGH DURABILITY BBAR (400-1100nm)
 - ADHESION: PER MIL-M-13508C PARA 4.4.6
 - ABRASION: SEVERE PER MIL-C-675C PARA 4.5.10
 - HUMIDITY: PER MIL-C-675C PARA 4.5.8
 - SALT SOLUBILITY: PER MIL-C-675C PARA 4.5.7
 - SALT SPRAY: PER MIL-C-675C PARA 4.5.9
 - TEMPERATURE CYCLE: PER MIL-M-13508C PARA 4.4.4
4. REFLECTION PERFORMANCE ACROSS CLEAR APERTURE ON CENTER

S1 & S2:
 R(AVG) <1.5% @ 400 - 1100nm
 R(ABS) <2.0% @ 400 - 1100nm

5. FINE GRIND SURFACE

6. ROHS COMPLIANT



**FOR INFORMATION ONLY:
 DO NOT MANUFACTURE
 PARTS TO THIS DRAWING**

SPECIFICATIONS SUBJECT TO CHANGE WITHOUT NOTICE
 DIMENSIONS ARE FOR REFERENCE ONLY

	S1	S2
SHAPE	PLANO	PLANO
SURFACE QUALITY	80-50	80-50
CLEAR APERTURE	$\phi 45.72$	$\phi 45.72$
SURFACE FLATNESS	2λ (typical)	2λ (typical)
BEVEL	PROTECTED AS NEEDED	PROTECTED AS NEEDED



ALL DIMS IN mm

EO® Edmund Optics®

TITLE

50.8mm Dia., 3.18mm Thick, 400-1100nm, High Durability AR Coated Sapphire Window

DWG NO

18467

SHEET
1 OF 1