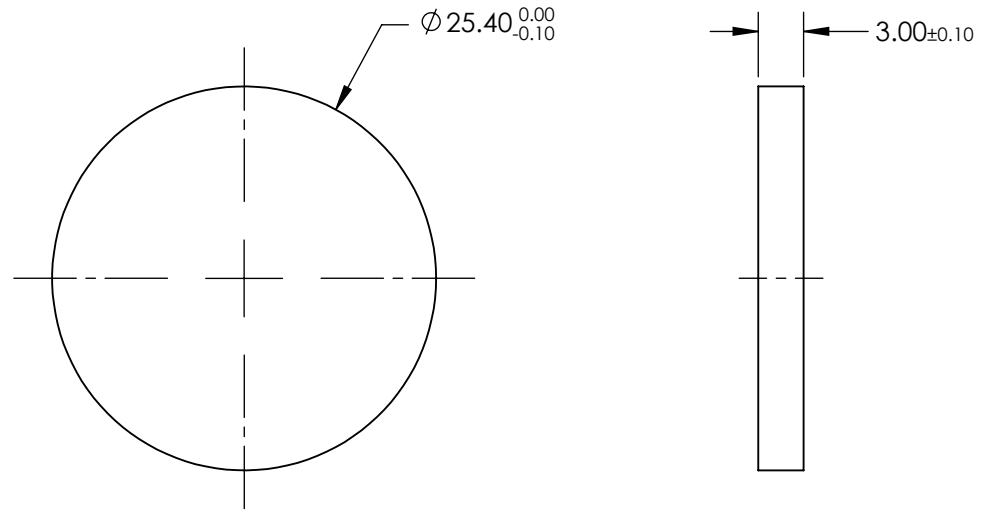


NOTES:

1. SUBSTRATE:
FUSED SILICA
2. SURFACE S2 TO BE PARALLEL TO SURFACE S1 TO WITHIN <3 ARCMIN
3. COATING (APPLY ACROSS COATING APERTURE)
@ 45° ANGLE OF INCIDENCE

S1. R(AVG) >99% @ 376 - 425nm
 T(AVG) >98% @ 700 - 900nm
 GDD: ±20fs² @ 376 - 425nm
 S2. R(AVG) <1% @ 700 - 900nm

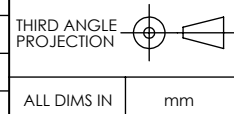
4. FINE GRIND SURFACE
5. REFLECTION WAVELENGTH: 400nm
TRANSMISSION WAVELENGTH: 800nm
6. WAVEFRONT DISTORTION: λ/10 @ 632.8nm




**FOR INFORMATION ONLY:
DO NOT MANUFACTURE
PARTS TO THIS DRAWING**

SPECIFICATIONS SUBJECT TO CHANGE WITHOUT NOTICE
 DIMENSIONS ARE FOR REFERENCE ONLY

	S1	S2
SHAPE	PLANO	PLANO
SURFACE FLATNESS	.125 WAVES	.125 WAVES
SURFACE QUALITY	10-5	10-5
CLEAR APERTURE	Ø20.32	Ø20.32
BEVEL	PROTECTIVE AS NEEDED	PROTECTIVE AS NEEDED



 Edmund Optics®	
TITLE	25.4mm Dia., 800nm T, 400nm R Ti:sapphire Ultrafast Harmonic Separator
DWG NO	12661
SHEET	1 OF 1