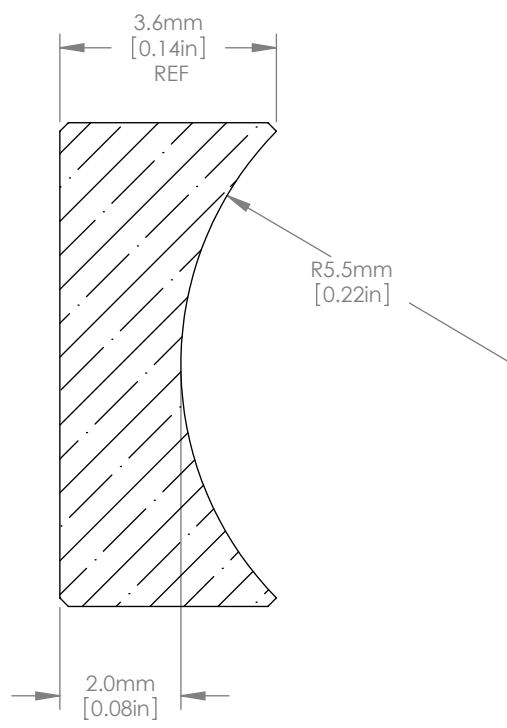
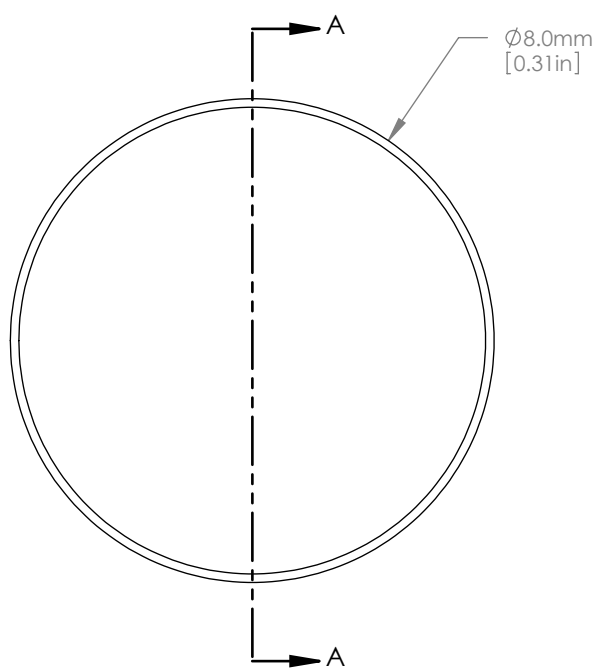




SCALE 1:1



NOTES/SPECIFICATIONS:

1. DESIGN WAVELENGTH: 588nm
2. FOCAL LENGTH:  $f = -12.0\text{mm} \pm 1\%$
3. BACK FOCAL LENGTH(REF):  $bf = -13.4\text{mm}$
4. CLEAR APERTURE:  $>90\%$
5. SURFACE QUALITY: 40-20 SCRATCH-DIG
6. CENTRATION:  $\leq 3\text{arcmin}$
7. DIAMETER TOLERANCE:  $+0.0/-0.1\text{mm}$
8. THICKNESS TOLERANCE:  $\pm 0.1\text{mm}$

FOR INFORMATION ONLY  
NOT FOR MANUFACTURING PURPOSES

DRAWING PROJECTION		
NAME	DATE	
DRAWN GG	15/NOV/10	
APPROVAL JC	13/DEC/10	
COPYRIGHT © 2010 BY THORLABS		
VALUES IN PARENTHESIS ARE CALCULATED AND MAY CONTAIN ROUND OFF ERRORS		

<b>THORLABS</b> www.thorlabs.com	
D=8.0mm F=-12.0mm UVFS PLANO CONCAVE LENS	
MATERIAL	REV
UV GRADE FUSED SILICA	B
ITEM #	APPROX WEIGHT
LC4291	0.02 kg