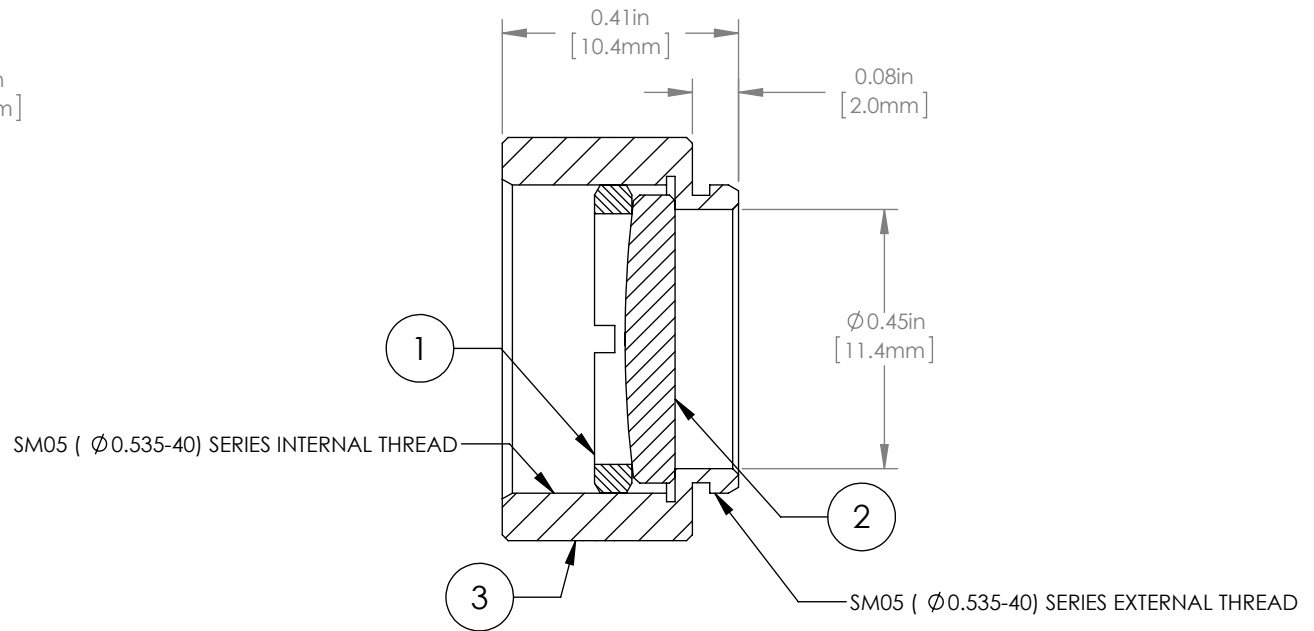
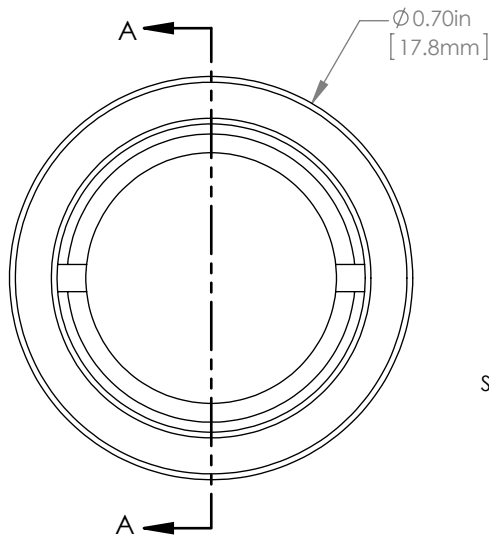


	PART DESCRIPTION	MATERIAL
①	SM05RR	ANODIZED ALUMINUM
②	LA600-UV	UV FUSED SILICA
③	ENGRAVED HOUSING	ANODIZED ALUMINUM



NOTES/SPECIFICATIONS:

1. DESIGN WAVELENGTH: 546nm
2. FOCAL LENGTH: $f=100.0\text{mm} \pm 1\%$
3. WORKING DISTANCE (REF): 95.6mm
4. CLEAR APERTURE: $> \text{Ø} 11.05\text{mm}$
5. SURFACE QUALITY: 40-20 SCRATCH-DIG
6. COATING: BBAR $R_{\text{avg}} < 0.5\%$ FROM 245-400nm, AOI: 0° , ON OUTER OPTICAL SURFACES

FOR INFORMATION ONLY
NOT FOR MANUFACTURING PURPOSES

DRAWING PROJECTION			THORLABS www.thorlabs.com $\text{Ø} 1/2"$ MOUNTED PLANO-CONVEX LENS, $f=100\text{mm}$, -UV COAT	
	NAME	DATE		
DRAWN	GG	13/OCT/15	MATERIAL	
APPROVAL	DD	13/OCT/15		
COPYRIGHT © 2015 BY THORLABS			SEE TABLE	
VALUES IN PARENTHESIS ARE CALCULATED AND MAY CONTAIN ROUND OFF ERRORS			ITEM #	APPROX WEIGHT
			LA4600-UV-ML	3 g
			REV	A