

NOTES:

1. SUBSTRATE MATERIAL:  
N-BK7

2. SURFACE S2 TO BE PARALLEL WITH SURFACE S1 TO WITHIN  $\leq 3$ ARCMIN

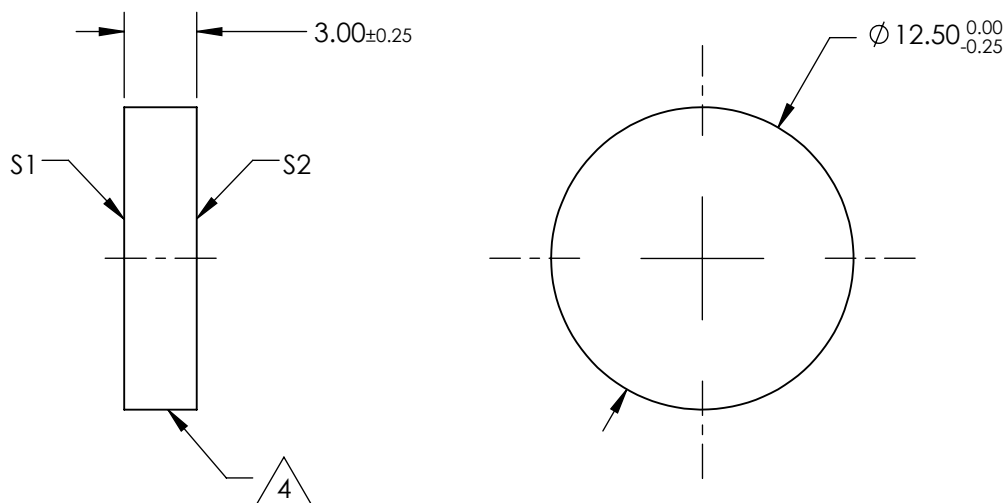
3. COATING (APPLY ACROSS CLEAR APERTURE)

S1: 80% R  $\pm 5\%$  @ 550nm  
20% T  $\pm 5\%$  @ 550nm

S2: AR R(avg)  $\leq 1\%$ , R(abs)  $\leq 2\%$  @ 700 - 1100nm

4.  CUT WITH 0.25mm MAXIMUM EDGE CHIP

5. ROHS COMPLIANT

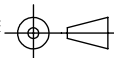


**FOR INFORMATION ONLY:  
DO NOT MANUFACTURE  
PARTS TO THIS DRAWING**

SPECIFICATIONS SUBJECT TO CHANGE WITHOUT NOTICE  
DIMENSIONS ARE FOR REFERENCE ONLY

	S1	S2
SHAPE	PLANO	PLANO
ANGLE OF INCIDENCE	45°	45°
SURFACE QUALITY	60-40	60-40
SURFACE FLATNESS	1λ PER 25mm	1λ PER 25mm

THIRD ANGLE  
PROJECTION



ALL DIMS IN

mm

 **Edmund Optics®**

TITLE

Ø12.5mm, 80 R/20 T, PLATE BEAMSPLITTER

DWG NO

68418

SHEET  
1 OF 1