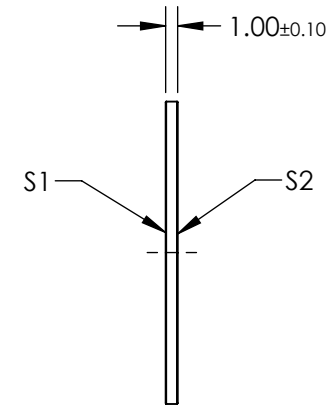
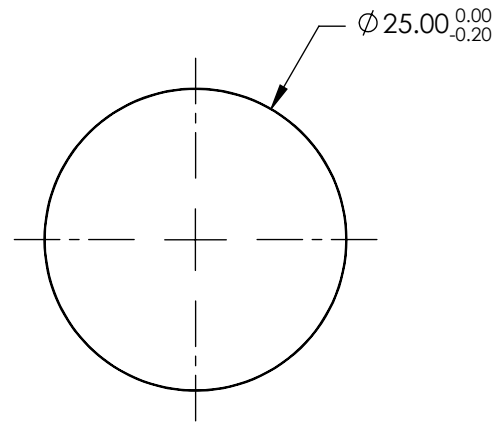


NOTES:

1. SUBSTRATE:  
FUSED SILICA
2. SURFACE S2 TO BE PARALLEL TO SURFACE S1 TO WITHIN <5 ARCSEC
3. COATING (APPLY ACROSS COATING APERTURE):  
S1 & S2: NIR II (750-1550nm)  
R(ABS) ≤1.5% @ 750 - 800nm  
R(ABS) ≤1.0% @ 800 - 1550nm  
R(AVG) ≤0.7% @ 750 - 1550nm
4. WAVELENGTH RANGE: 750 - 1550nm



**FOR INFORMATION ONLY:  
DO NOT MANUFACTURE  
PARTS TO THIS DRAWING**

SPECIFICATIONS SUBJECT TO CHANGE WITHOUT NOTICE  
DIMENSIONS ARE FOR REFERENCE ONLY

	S1	S2	Edmund Optics®			
SHAPE	PLANO	PLANO	<div style="display: flex; align-items: center;"> <div style="margin-right: 10px;"> <p>THIRD ANGLE PROJECTION</p> </div> <div> <p>TITLE</p> <p>25mm Dia., 1 mm Thick, NIR II Coated <math>\lambda/10</math> Fused Silica Window</p> </div> </div>			
SURFACE QUALITY	20-10	20-10				
TRANSMITTED WAVEFRONT (P-V)	0.10 WAVE	0.10 WAVE				
CLEAR APERTURE	$\phi 20.00$	$\phi 20.00$				
BEVEL	PROTECTIVE AS NEEDED	PROTECTIVE AS NEEDED				
ALL DIMS IN	mm	DWG NO	11900	SHEET 1 OF 1		