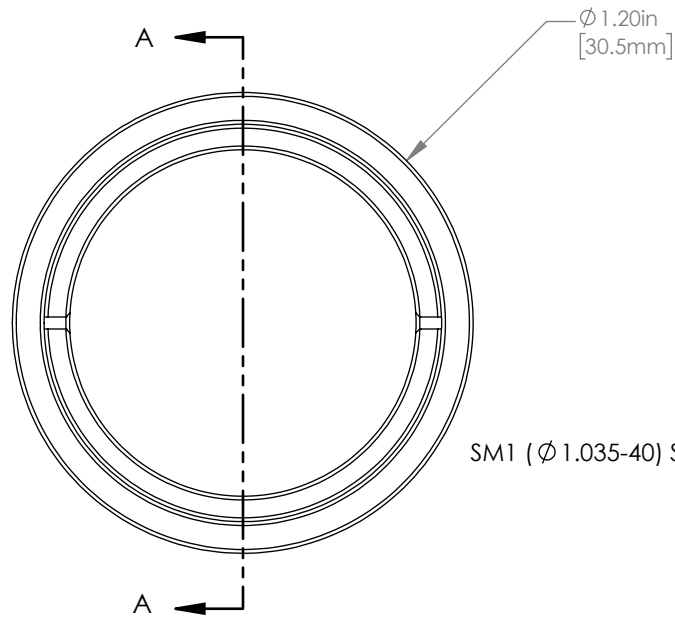
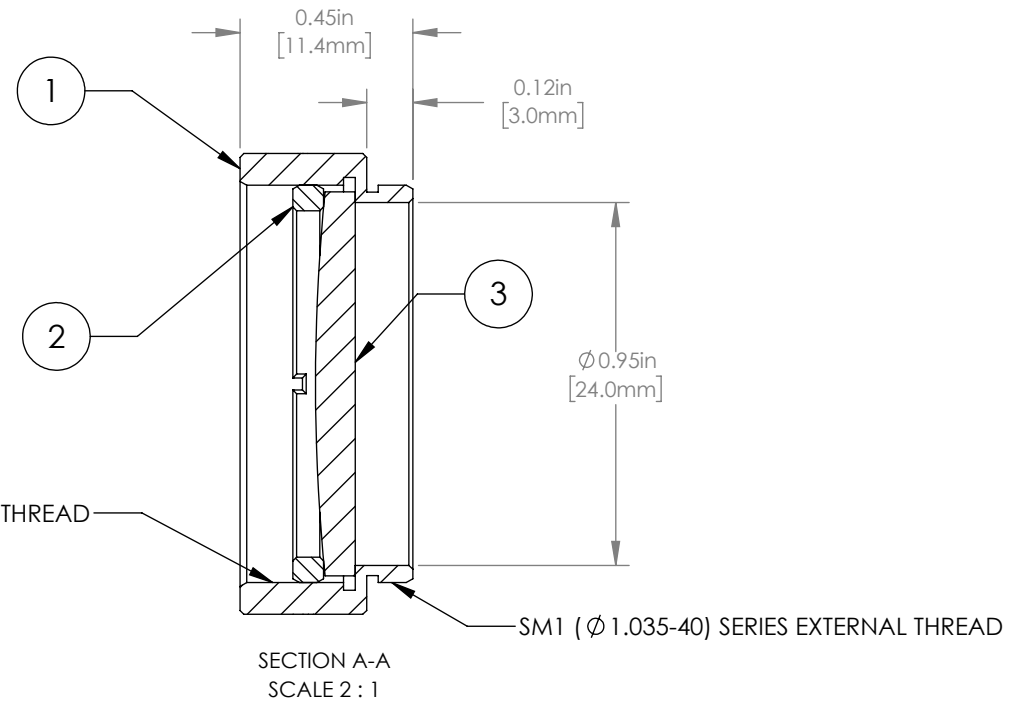


	PART DESCRIPTION	MATERIAL
①	ENGRAVED HOUSING	ANODIZED ALUMINUM
②	SM1RR	ANODIZED ALUMINUM
③	LA1461-B	N-BK7



SM1 ($\varnothing 1.035-40$) SERIES INTERNAL THREAD



NOTES/SPECIFICATIONS:

- DESIGN WAVELENGTH: 587.6 nm
- FOCAL LENGTH: $f=249.2\text{ mm} \pm 1\%$
- WORKING DISTANCE: 243.6 mm
- CLEAR APERTURE: $\varnothing 22.9\text{ mm}$
- SURFACE QUALITY: 40-20 SCRATCH-DIG
- COATING: BBAR 650-1050 nm, $R_{\text{avg}} < 0.5\%$, 0° AOI

FOR INFORMATION ONLY
NOT FOR MANUFACTURING PURPOSES

DRAWING PROJECTION						THORLABS www.thorlabs.com	
NAME	DATE	MOUNTED $\varnothing 25.4\text{ mm}$, $f = 250.0\text{ mm}$				PLANO CONVEX LENS, B COATED	
DRAWN	GG	22/AUG/19	MATERIAL				REV B
APPROVAL	DD	22/AUG/19	SEE TABLE				
COPYRIGHT © 2019 BY THORLABS						ITEM #	APPROX WEIGHT
VALUES IN PARENTHESIS ARE CALCULATED AND MAY CONTAIN ROUND OFF ERRORS						LA1461-B-ML	9 g