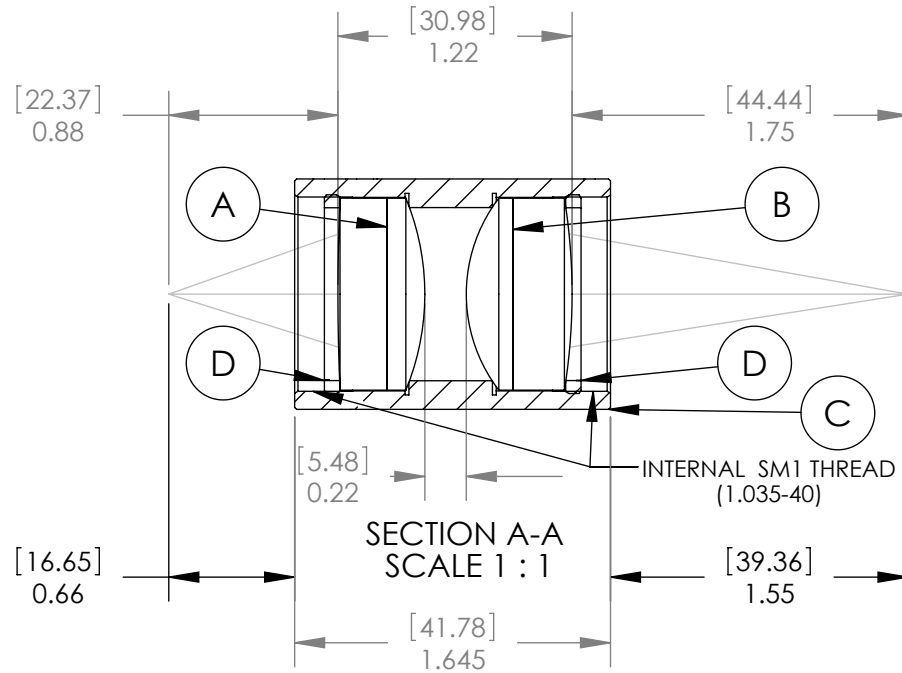
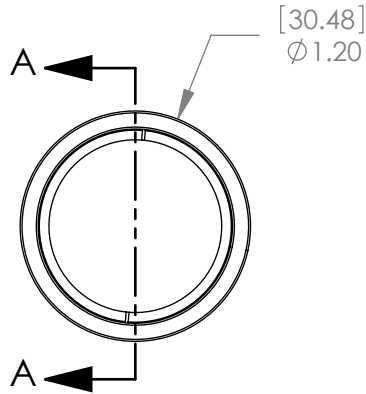


| PART | PART NO. | MATERIAL |
|------|--------------|------------------|
| A | AC254-030-A1 | BAF10-SFL6 |
| B | AC254-050-A1 | BAF10-SF10 |
| C | LENS MOUNT | 6061-T6 ALUMINUM |
| D | SM1RR | 6061-T6 ALUMINUM |



SPECIFICATIONS:

DESIGN WAVELENGTH: 486.1, 587.6 & 656.3nm
 COATING: BBAR 400-700nm
 COATING RANGE: R(AVG)<0.5% FROM 400-700nm
 MAGNIFICATION: 1:1.67

Dimensions are in $\frac{[mm]}{in}$

NOTE:
 FOR INFORMATION ONLY. NOT INTENDED FOR MANUFACTURING.

THORLABS INC. PO BOX 366
 NEWTON NJ

| | NAME | DATE |
|-----------|------|----------|
| DRAWN | AP | 04/14/06 |
| ENG APPR. | TO | 04/14/06 |
| MFG APPR. | TO | 04/14/06 |

PROPRIETARY AND CONFIDENTIAL

THE INFORMATION CONTAINED IN THIS DRAWING IS THE SOLE PROPERTY OF THORLABS, INC. ANY REPRODUCTION IN PART OR AS A WHOLE WITHOUT THE WRITTEN PERMISSION OF THORLABS, INC. IS PROHIBITED.

TITLE: MATCHED ACHROMAT PAIRS
 F1=30mm, F1=50mm

MATERIAL: SEE TABLE
 SIZE A C

SCALE: 1:1 SHEET 1 OF 1

DWG. NO. 13319-E01
 PART NO. MAP103050-A1