

NOTES:

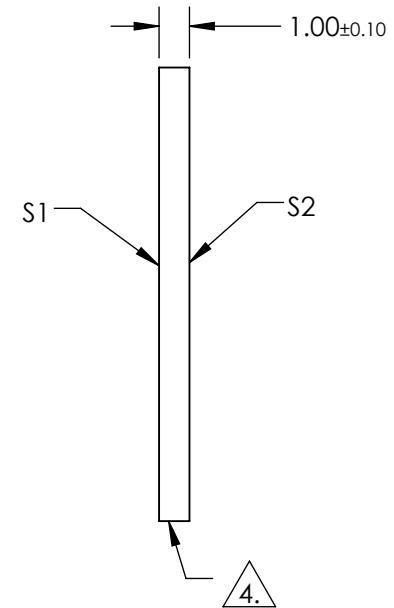
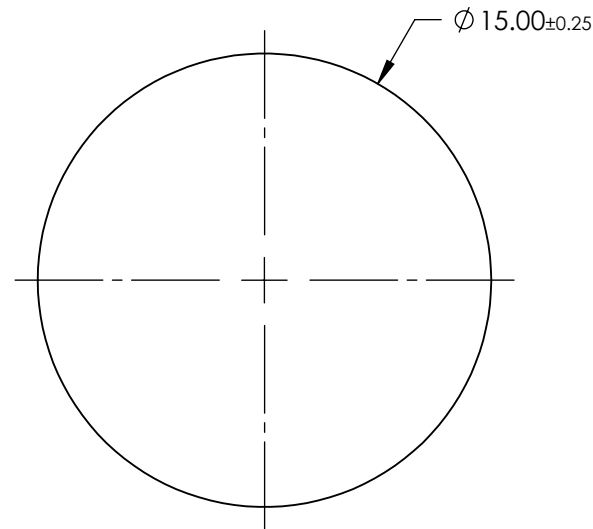
1. SUBSTRATE:
SAPPHIRE (AL₂O₃)
2. SURFACE S2 TO BE PARALLEL WITH SURFACE S1 TO WITHIN ≤ 3.5 ARCMIN
3. COATING (APPLY ACROSS CLEAR APERTURE)

S1 & S2: R(AVG) <1% @ 1650 - 3000nm
R(ABS) <2% @ 1650 - 3000nm

4. FINE GRIND SURFACE

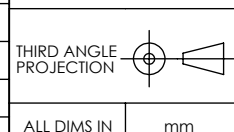
5. ROHS COMPLIANT

**FOR INFORMATION ONLY:
DO NOT MANUFACTURE
PARTS TO THIS DRAWING**



SPECIFICATIONS SUBJECT TO CHANGE WITHOUT NOTICE
DIMENSIONS ARE FOR REFERENCE ONLY

| | S1 | S2 |
|---|----------------------|----------------------|
| SHAPE | PLANO | PLANO |
| CLEAR APERTURE | Ø13.50 | Ø13.50 |
| SURFACE FLATNESS | 2λ | 2λ |
| SURFACE QUALITY | 80-50 | 80-50 |
| BIREFRINGENCE (n _o -n _e) | 0.008 | 0.008 |
| BEVEL | PROTECTIVE AS NEEDED | PROTECTIVE AS NEEDED |



| | |
|------------------------------------|---|
| EO ® Edmund Optics ® | |
| TITLE | 15mm Dia., 1mm Thick, BBAR (1650-3000nm) AR Coated Sapphire Window |
| DWG NO | 21004 |
| | SHEET 1 OF 1 |