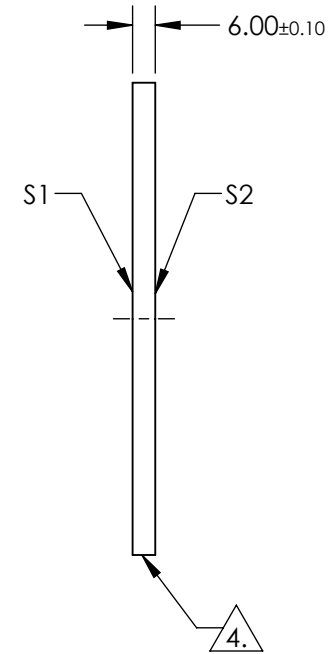
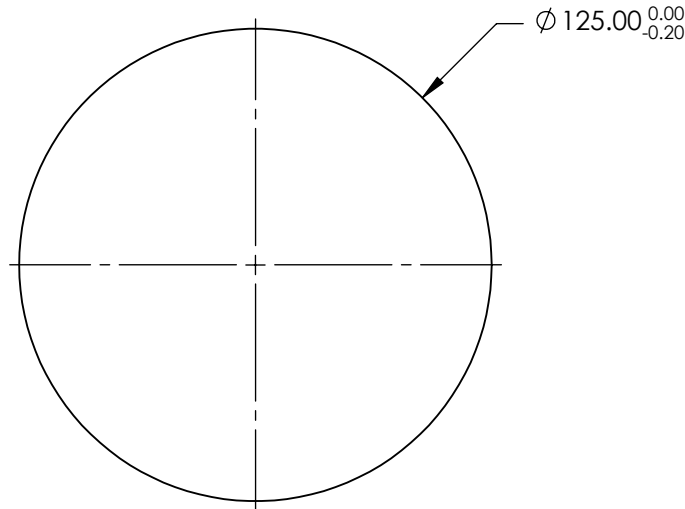


NOTES:

1. SUBSTRATE: Fused Silica (Corning 7980)
2. COATING (APPLY ACROSS CLEAR APERTURE)
 S1 & S2: R(ABS) ≤1.0% FROM 350 - 450nm
 R(AVG) ≤1.5% FROM 250 - 700nm
3. SURFACE S1 TO BE PARALLEL WITH SURFACE S2 TO WITHIN < 10 ARCSEC

△ 4. FINE GRIND SURFACE

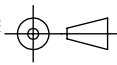
5. ROHS COMPLIANT



**FOR INFORMATION ONLY:
DO NOT MANUFACTURE
PARTS TO THIS DRAWING**

SPECIFICATIONS SUBJECT TO CHANGE WITHOUT NOTICE
DIMENSIONS ARE FOR REFERENCE ONLY

	S1	S2
SHAPE	PLANO	PLANO
SURFACE QUALITY	40-20	40-20
CLEAR APERTURE	Ø 112.50	Ø 112.50
BEVEL	PROTECTED AS NEEDED	PROTECTED AS NEEDED

THIRD ANGLE PROJECTION 

ALL DIMS IN mm

 **Edmund Optics®**

TITLE: 125mm Dia., 6mm Thick, UV-VIS Coated λ/10 Fused Silica Window

DWG NO: 22065

SHEET 1 OF 1