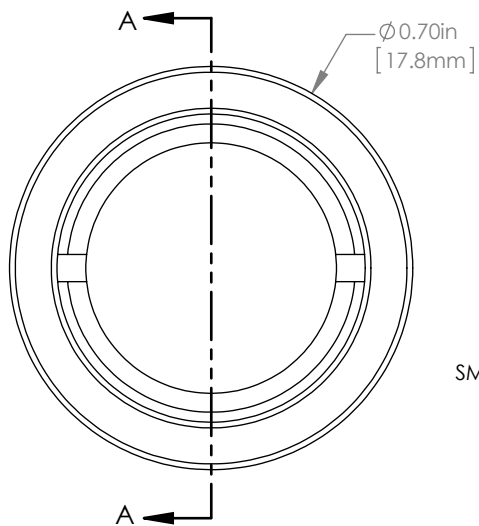
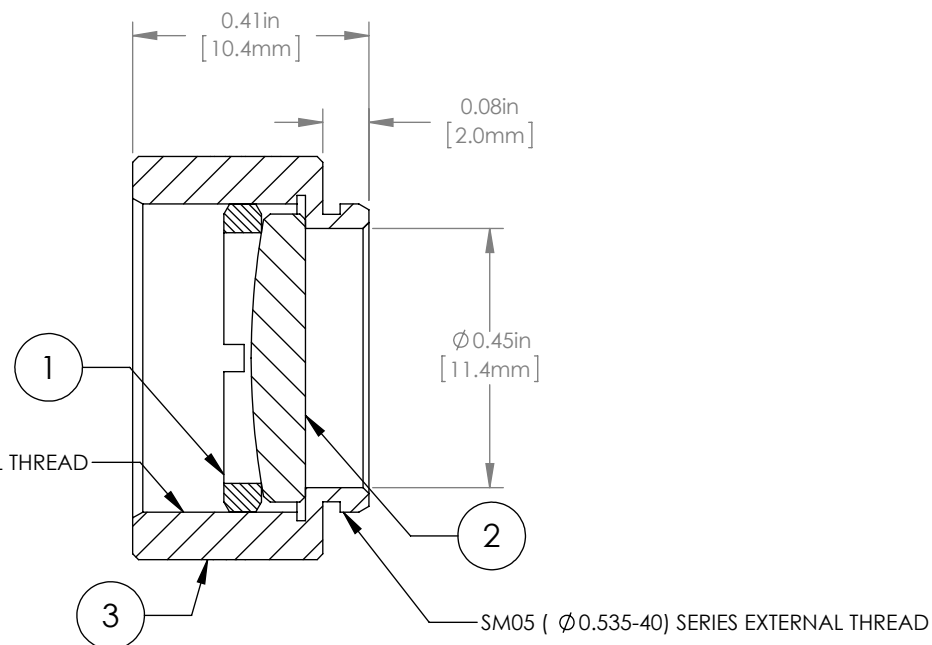


	PART DESCRIPTION	MATERIAL
①	SM05RR	ANODIZED ALUMINUM
②	LA4327-UV	UV FUSED SILICA
③	ENGRAVED HOUSING	ANODIZED ALUMINUM



SM05 (\varnothing 0.535-40) SERIES INTERNAL THREAD



NOTES/SPECIFICATIONS:

- DESIGN WAVELENGTH: 546nm
- FOCAL LENGTH: $f=75.0\text{mm} \pm 1\%$
- WORKING DISTANCE (REF): 70.6mm
- CLEAR APERTURE: $> \varnothing 11.05\text{mm}$
- SURFACE QUALITY: 40-20 SCRATCH-DIG
- COATING: BBAR $R_{\text{avg}} < 0.5\%$ FROM 245-400nm, AOI: 0° , ON OUTER OPTICAL SURFACES

FOR INFORMATION ONLY
NOT FOR MANUFACTURING PURPOSES

DRAWING PROJECTION						THORLABS www.thorlabs.com	
NAME	DATE	$\varnothing 1/2"$ MOUNTED PLANO-CONVEX LENS, $f=75\text{mm}$, -UV COAT				MATERIAL	REV
DRAWN	GG	13/OCT/15	SEE TABLE				A
APPROVAL	DD	13/OCT/15	ITEM #				APPROX WEIGHT
COPYRIGHT © 2015 BY THORLABS VALUES IN PARENTHESIS ARE CALCULATED AND MAY CONTAIN ROUND OFF ERRORS		LA4327-UV-ML		4 g			