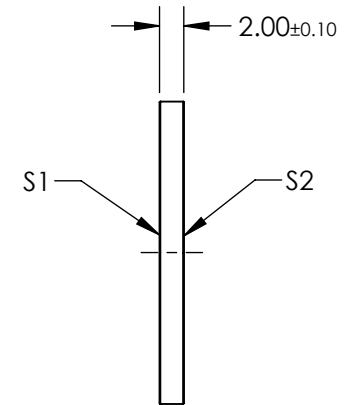
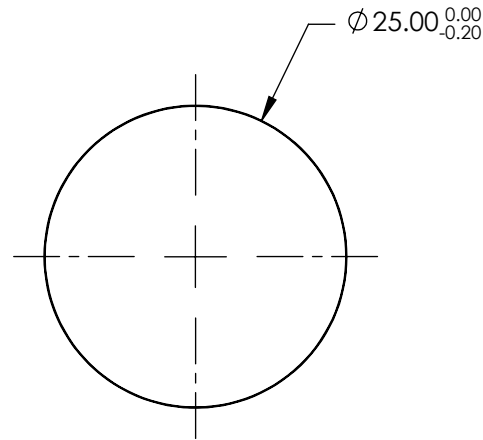


NOTES:

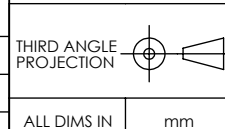
1. SUBSTRATE:
FUSED SILICA
2. SURFACE S2 TO BE PARALLEL TO SURFACE S1 TO WITHIN <5 ARCSEC
3. COATING (APPLY ACROSS COATING APERTURE):
S1 & S2: NIR II (750-1550nm)
R(ABS) ≤1.5% @ 750 - 800nm
R(ABS) ≤1.0% @ 800 - 1550nm
R(AVG) ≤0.7% @ 750 - 1550nm
4. WAVELENGTH RANGE: 750 - 1550nm



**FOR INFORMATION ONLY:
DO NOT MANUFACTURE
PARTS TO THIS DRAWING**

SPECIFICATIONS SUBJECT TO CHANGE WITHOUT NOTICE
DIMENSIONS ARE FOR REFERENCE ONLY

	S1	S2
SHAPE	PLANO	PLANO
SURFACE QUALITY	20-10	20-10
TRANSMITTED WAVEFRONT (P-V)	0.10 WAVE	0.10 WAVE
CLEAR APERTURE	Ø20.00	Ø20.00
BEVEL	PROTECTIVE AS NEEDED	PROTECTIVE AS NEEDED



EO® **Edmund Optics**®

TITLE	25mm Dia., 2mm Thick, NIR II Coated $\lambda/10$ Fused Silica Window	
DWG NO	11901	SHEET 1 OF 1