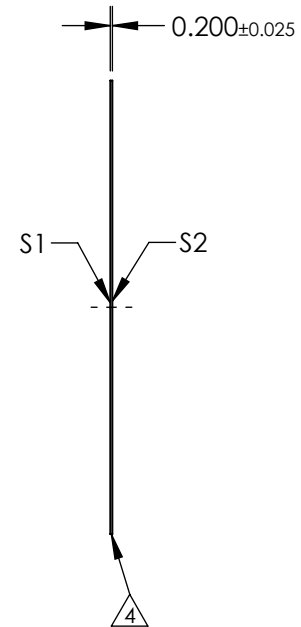
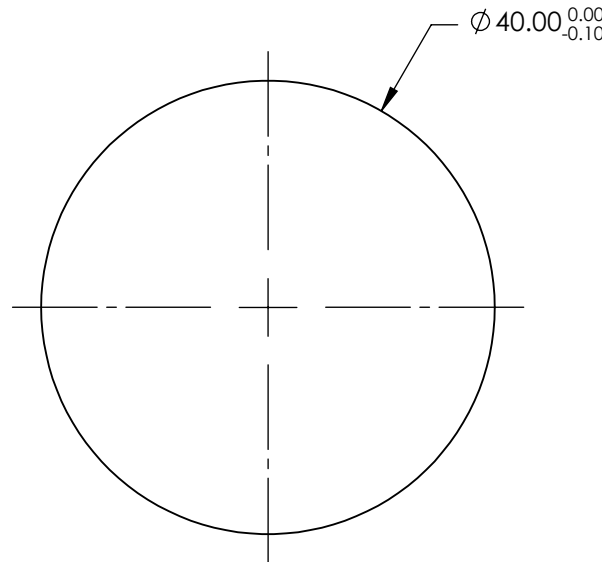
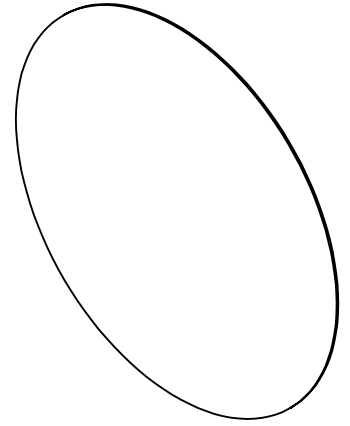


NOTES:

1. SUBSTRATE:  
N-BK7
2. S2 TO BE PARALLEL TO S1 TO <30 arcsec
3. COATING (APPLY ACROSS CLEAR APERTURE)  
S1 & S2: R(ABS) ≤0.25% @ 880nm  
R(AVG) ≤1.25% @ 400 - 870nm  
R(AVG) ≤1.25% @ 890 - 1000nm

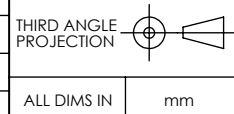
4. FINE GRIND SURFACE
5. RoHS COMPLIANT



**FOR INFORMATION ONLY:  
DO NOT MANUFACTURE  
PARTS TO THIS DRAWING**

SPECIFICATIONS SUBJECT TO CHANGE WITHOUT NOTICE  
DIMENSIONS ARE FOR REFERENCE ONLY

	S1	S2
SHAPE	PLANO	PLANO
SURFACE QUALITY	20-10	20-10
WAVELENGTH RANGE	400 - 1000nm	400 - 1000nm
BEVEL	PROTECTIVE AS NEEDED	PROTECTIVE AS NEEDED



**EO<sup>®</sup> Edmund Optics<sup>®</sup>**

TITLE 40mm Diameter VIS-NIR Coated, Ultra-Thin N-BK7 Window

DWG NO 22042 SHEET 1 OF 1