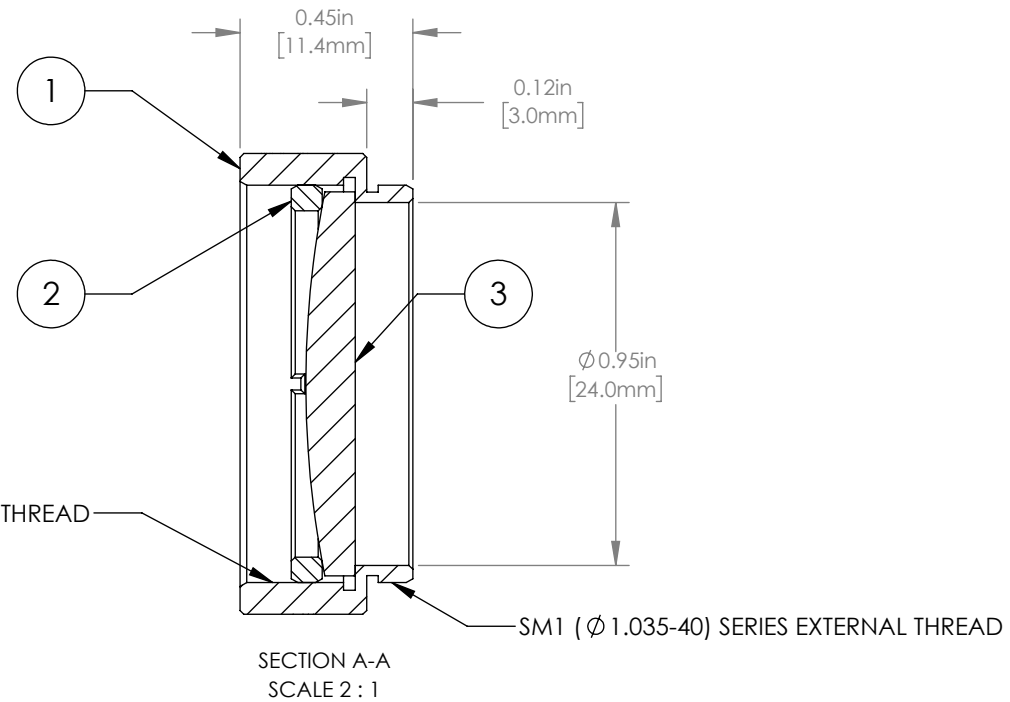
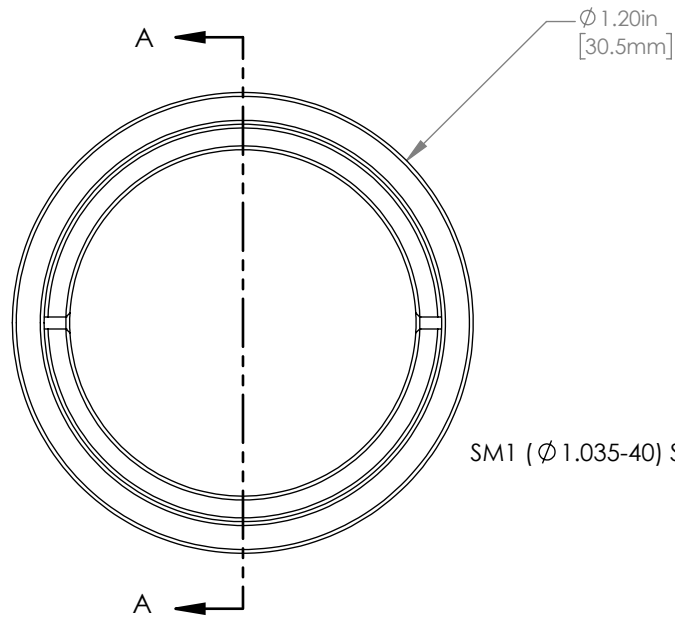


|   | PART DESCRIPTION | MATERIAL          |
|---|------------------|-------------------|
| ① | ENGRAVED HOUSING | ANODIZED ALUMINUM |
| ② | SM1RR            | ANODIZED ALUMINUM |
| ③ | LA1986-A         | N-BK7             |



NOTES/SPECIFICATIONS:

- DESIGN WAVELENGTH: 587.6 nm
- FOCAL LENGTH:  $f=124.6\text{ mm} \pm 1\%$
- WORKING DISTANCE: 118.6 mm
- CLEAR APERTURE:  $\phi 22.9\text{ mm}$
- SURFACE QUALITY: 40-20 SCRATCH-DIG
- COATING: BBAR 350-700 nm,  $R_{\text{avg}} < 0.5\%$ ,  $0^\circ$  AOI

FOR INFORMATION ONLY  
NOT FOR MANUFACTURING PURPOSES

| DRAWING PROJECTION  |      |  |               | <b>THORLABS</b><br>www.thorlabs.com |       |
|---|------|--|---------------|-------------------------------------|-------|
| NAME  | DATE | MOUNTED $\phi 25.4\text{ mm}$ , $f = 125.0\text{ mm}$<br>PLANO CONVEX LENS, A COATED |               |                                     |       |
| DRAWN   | GG   | 22/AUG/19  | MATERIAL      |                                     |       |
| APPROVAL  | DD   | 22/AUG/19  | SEE TABLE     |                                     | REV B |
| COPYRIGHT © 2019 BY THORLABS  |      |  |               |                                     |       |
| VALUES IN PARENTHESIS ARE CALCULATED AND MAY CONTAIN ROUND OFF ERRORS |      |  |               |                                     |       |
| ITEM #  |      |  | APPROX WEIGHT |                                     |       |
| LA1986-A-ML   |      |  | 9 g           |                                     |       |