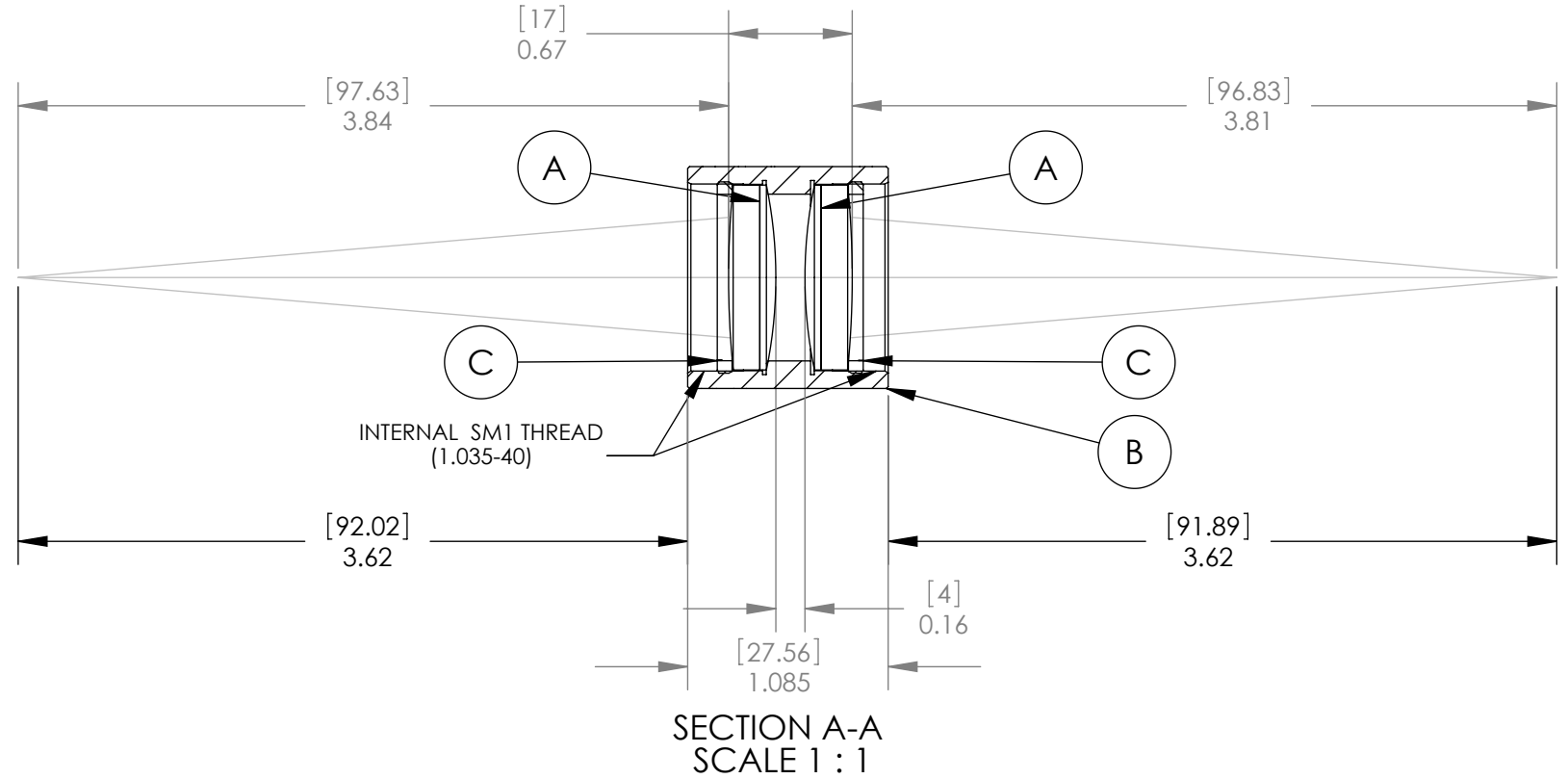
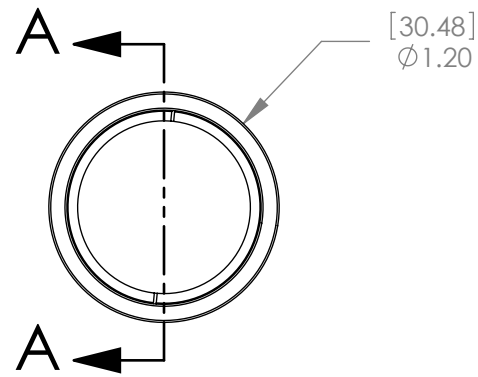


PART	PART NO.	MATERIAL
A	AC254-100-A1	BK7-SF5
B	LENS MOUNT	6061-T6 ALUMINUM
C	SM1RR	6061-T6 ALUMINUM



SPECIFICATIONS:

DESIGN WAVELENGTH: 486.1, 587.6, & 656.3nm  
 COATING: BBAR 400-700nm  
 COATING RANGE: R(AVG)<0.5% FROM 400-700nm  
 MAGNIFICATION: 1:2

DIMENSIONS ARE IN  $\frac{[mm]}{in}$

NOTE:  
FOR INFORMATION ONLY, NOT INTENDED FOR MANUFACTURING

	NAME	DATE
DRAWN	AP	04/12/06
ENG APPR.	TO	04/13/06
MFG APPR.	TO	04/13/06

**PROPRIETARY AND CONFIDENTIAL**  
 THE INFORMATION CONTAINED IN THIS DRAWING IS THE SOLE PROPERTY OF THORLABS, INC. ANY REPRODUCTION IN PART OR AS A WHOLE WITHOUT THE WRITTEN PERMISSION OF THORLABS, INC. IS PROHIBITED.

**THORLABS, INC.** PO BOX 366  
NEWTON NJ

TITLE: MATCHED ACHROMAT PAIR  
F1= 100mm, F2=100mm

MATERIAL: SEE TABLE SIZE B REV C

SCALE: 1:1 SHEET 1 OF 1

DWG. NO. 13302-E01 PART NO. MAP10100100-A1