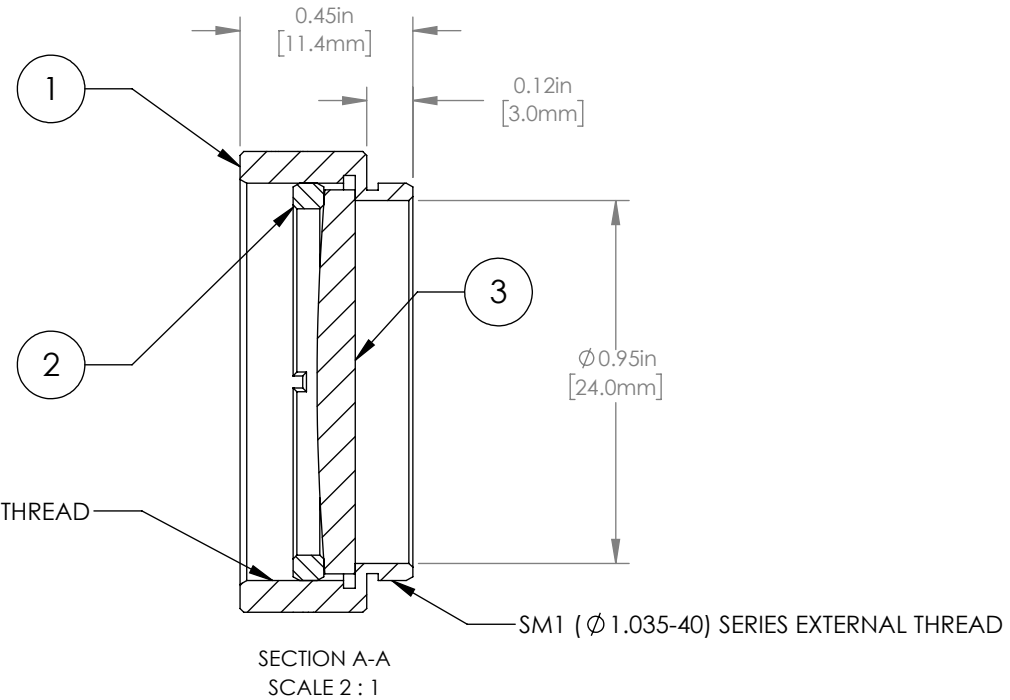
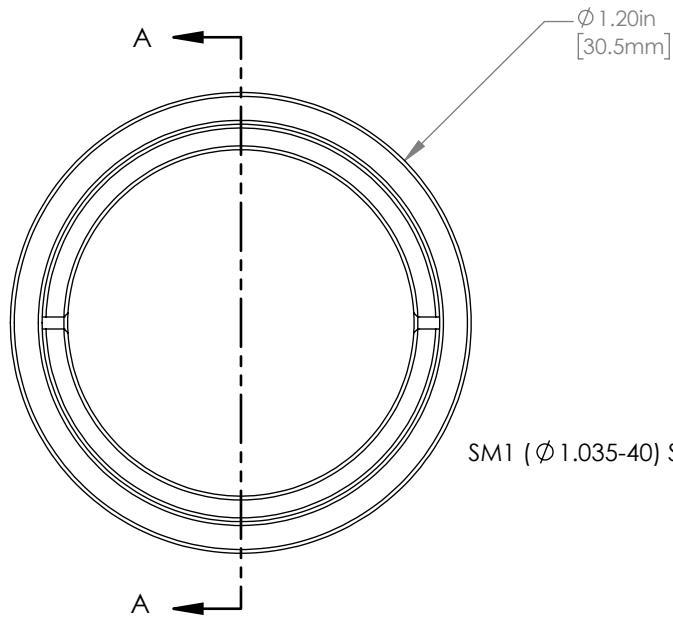


	PART DESCRIPTION	MATERIAL
①	ENGRAVED HOUSING	ANODIZED ALUMINUM
②	SM1RR	ANODIZED ALUMINUM
③	LA1484-B	N-BK7



NOTES/SPECIFICATIONS:

1. DESIGN WAVELENGTH: 587.6 nm
2. FOCAL LENGTH: $f=299.0 \text{ mm} \pm 1\%$
3. WORKING DISTANCE: 293.5 mm
4. CLEAR APERTURE: $\text{Ø}22.9 \text{ mm}$
5. SURFACE QUALITY: 40-20 SCRATCH-DIG
6. COATING: BBAR 650-1050 nm, $R_{\text{avg}} < 0.5\%$, 0° AOI

FOR INFORMATION ONLY
NOT FOR MANUFACTURING PURPOSES

DRAWING PROJECTION						THORLABS www.thorlabs.com	
NAME	DATE	MOUNTED $\text{Ø}25.4 \text{ mm}$, $f = 300.0 \text{ mm}$ PLANO CONVEX LENS, B COATED				REV B	
DRAWN	GG	22/AUG/19	MATERIAL				SEE TABLE
APPROVAL	DD	22/AUG/19	ITEM #				APPROX WEIGHT
COPYRIGHT © 2019 BY THORLABS <small>VALUES IN PARENTHESIS ARE CALCULATED AND MAY CONTAIN ROUND OFF ERRORS</small>				LA1484-B-ML		9 g	