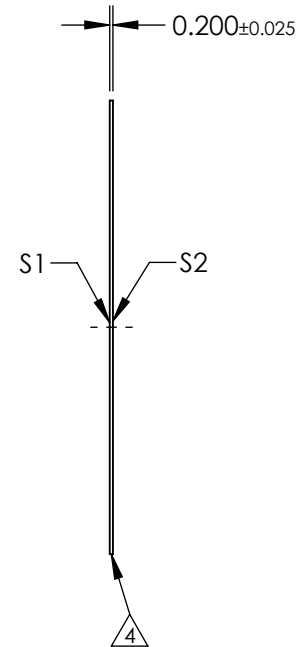
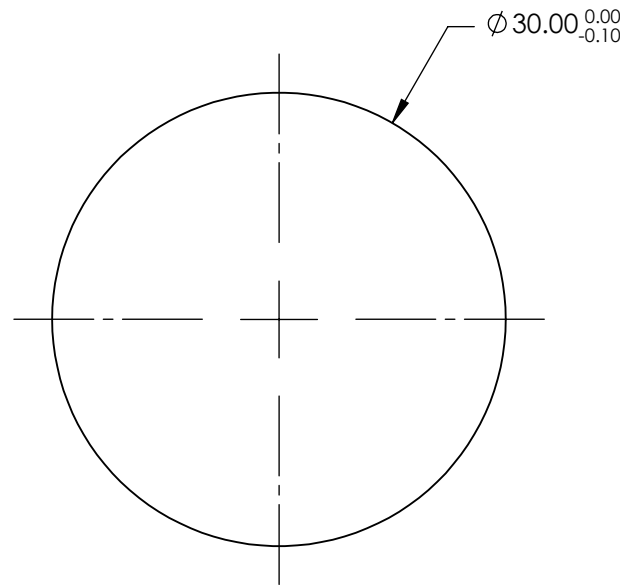
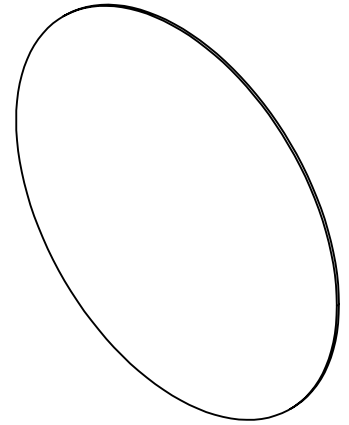


NOTES:

1. SUBSTRATE:
N-BK7
2. S2 TO BE PARALLEL TO S1 TO <30 arcsec
3. COATING (APPLY ACROSS CLEAR APERTURE)
S1 & S2: R(ABS) ≤0.25% @ 880nm
R(AVG) ≤1.25% @ 400 - 870nm
R(AVG) ≤1.25% @ 890 - 1000nm

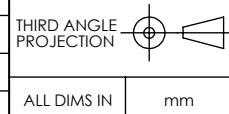
4. FINE GRIND SURFACE
5. RoHS COMPLIANT



**FOR INFORMATION ONLY:
DO NOT MANUFACTURE
PARTS TO THIS DRAWING**

SPECIFICATIONS SUBJECT TO CHANGE WITHOUT NOTICE
DIMENSIONS ARE FOR REFERENCE ONLY

	S1	S2
SHAPE	PLANO	PLANO
SURFACE QUALITY	20-10	20-10
WAVELENGTH RANGE	400 - 1000nm	400 - 1000nm
BEVEL	PROTECTIVE AS NEEDED	PROTECTIVE AS NEEDED



EO® **Edmund Optics**®

TITLE	30mm Diameter VIS-NIR Coated, Ultra-Thin N-BK7 Window	
DWG NO	22041	SHEET 1 OF 1