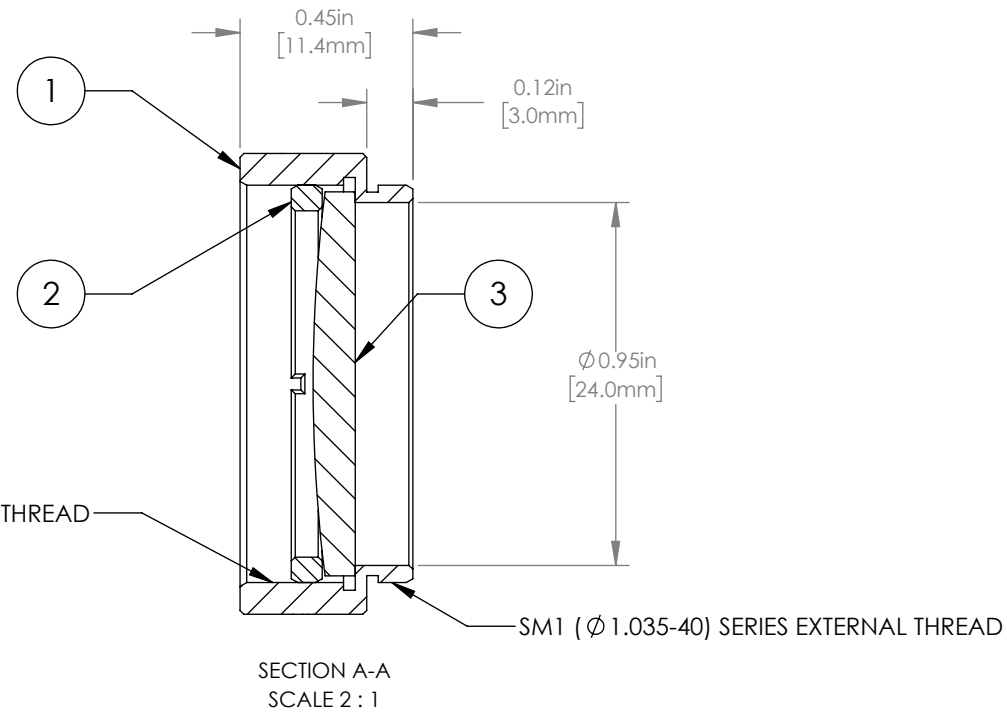
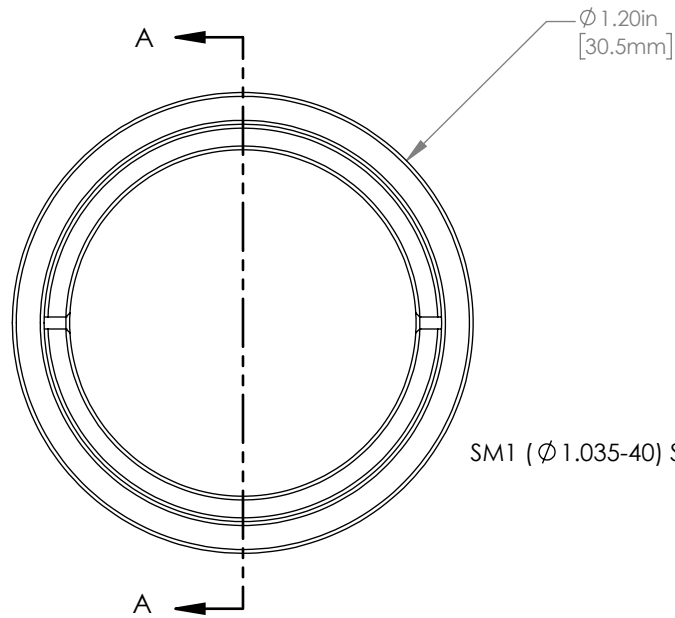


	PART DESCRIPTION	MATERIAL
①	ENGRAVED HOUSING	ANODIZED ALUMINUM
②	SM1RR	ANODIZED ALUMINUM
③	LA1708	N-BK7



NOTES/SPECIFICATIONS:

1. DESIGN WAVELENGTH: 587.6 nm
2. FOCAL LENGTH:  $f=199.3\text{ mm} \pm 1\%$
3. WORKING DISTANCE: 193.7 mm
4. CLEAR APERTURE:  $\phi 22.9\text{ mm}$
5. SURFACE QUALITY: 40-20 SCRATCH-DIG

FOR INFORMATION ONLY  
NOT FOR MANUFACTURING PURPOSES

DRAWING PROJECTION						<b>THORLABS</b> www.thorlabs.com	
NAME	DATE	MOUNTED $\phi 25.4\text{ mm}$ , $f = 200.0\text{ mm}$				PLANO CONVEX LENS	
DRAWN	GG	22/AUG/19				REV B	
APPROVAL	DD	22/AUG/19				MATERIAL	
<b>COPYRIGHT © 2019 BY THORLABS</b>				SEE TABLE			
VALUES IN PARENTHESIS ARE CALCULATED AND MAY CONTAIN ROUND OFF ERRORS				ITEM #		APPROX WEIGHT	
				LA1708-ML		9 g	