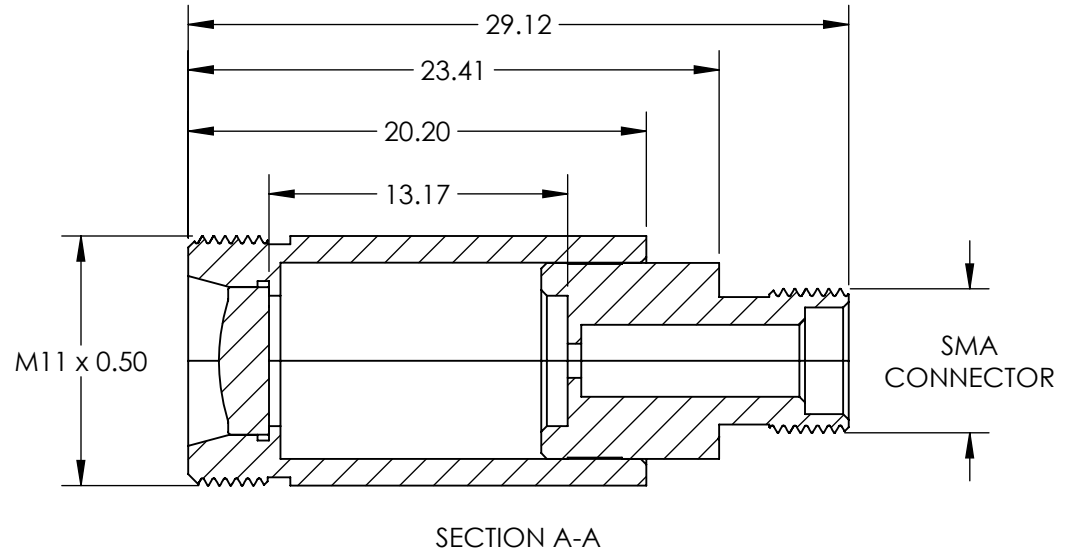
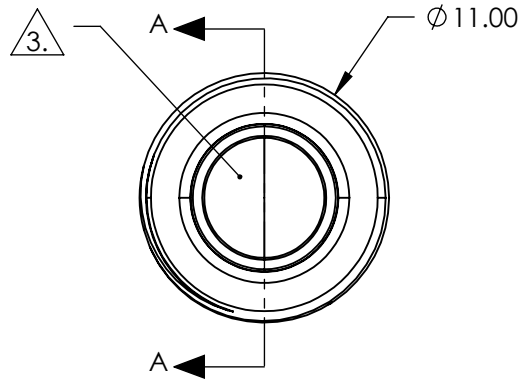
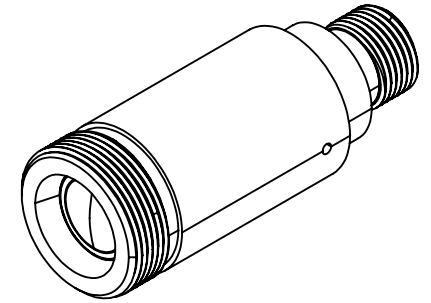


NOTES:

1. MATERIAL:
HOUSING: STAINLESS STEEL
LENS: D-ZK3
2. COATING (APPLY ACROSS CLEAR APERTURE)
R(AVG) <0.4% @ 600 - 1050nm
3. CLEAR APERTURE: 5.00 mm
4. RoHS: COMPLIANT



SPECIFICATIONS SUBJECT TO CHANGE WITHOUT NOTICE
DIMENSIONS ARE FOR REFERENCE ONLY

EO® Edmund Optics®

**FOR INFORMATION ONLY:
DO NOT MANUFACTURE
PARTS TO THIS DRAWING**

THIRD ANGLE PROJECTION		TITLE	633nm Alignment, 0.16 NA Fiber Collimator w/ SMA Connector	
ALL DIMS IN	mm	DWG NO	67724	SHEET 1 OF 1