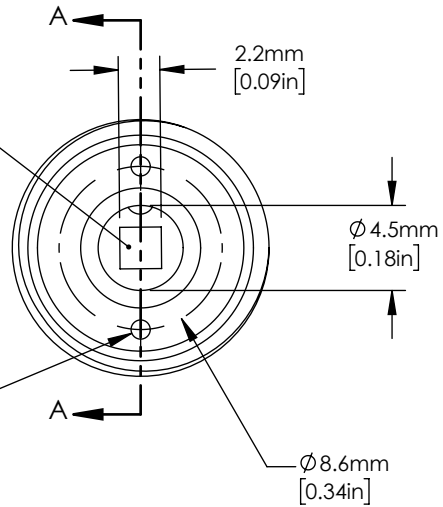
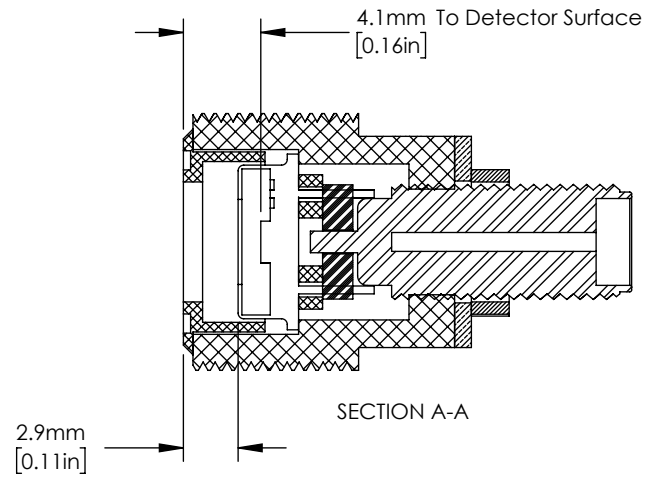


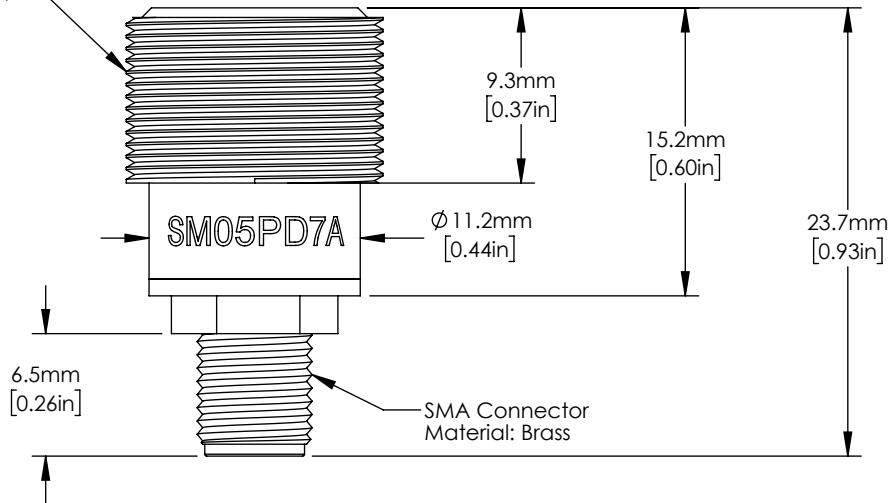
FGAP71 GaP Photodiode  
 Active Area: 4.8 mm<sup>2</sup>  
 Range: 150 - 550 nm  
 Cathode Grounded



Use with Adjustable  
 Spanner Wrench



Housing  
 External Thread  
 SM05 (0.535-40)  
 Material: Black DELRIN



FOR INFORMATION ONLY  
 NOT FOR MANUFACTURING PURPOSES

DRAWING PROJECTION			<b>THORLABS</b> www.thorlabs.com	
NAME	DATE	SM05 Mounted GaP-Photodiode		
WKC	29/MAR/18			
APPROVAL	EC	30/MAR/18	MATERIAL	REV
COPYRIGHT © 2018 BY THORLABS			See Drawing	D
VALUES IN PARENTHESIS ARE CALCULATED AND MAY CONTAIN ROUND OFF ERRORS		ITEM #	APPROX WEIGHT	
		SM05PD7A	.005 kg	