

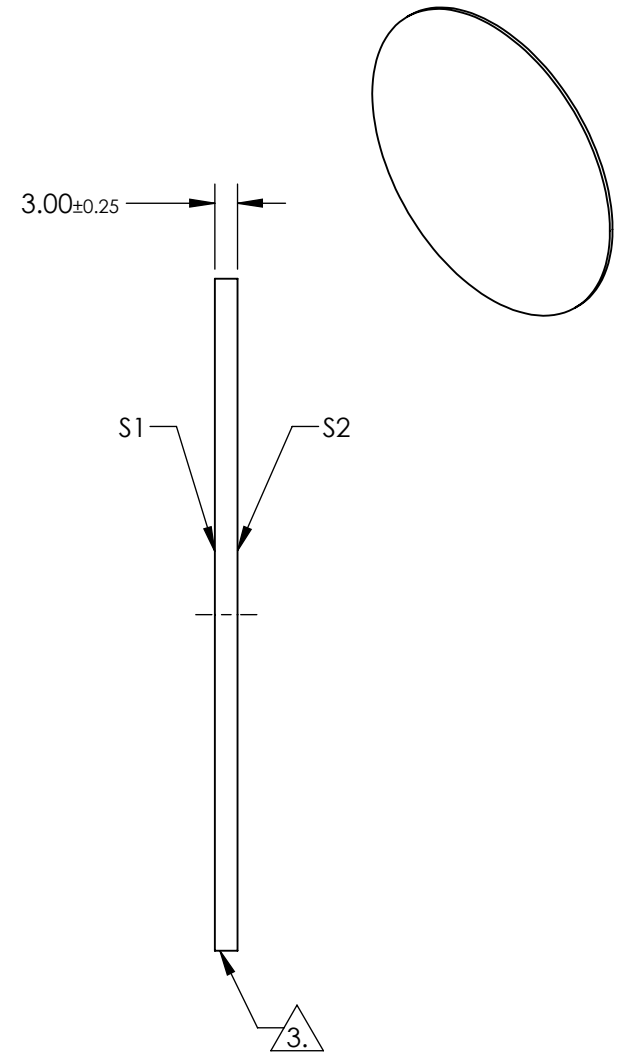
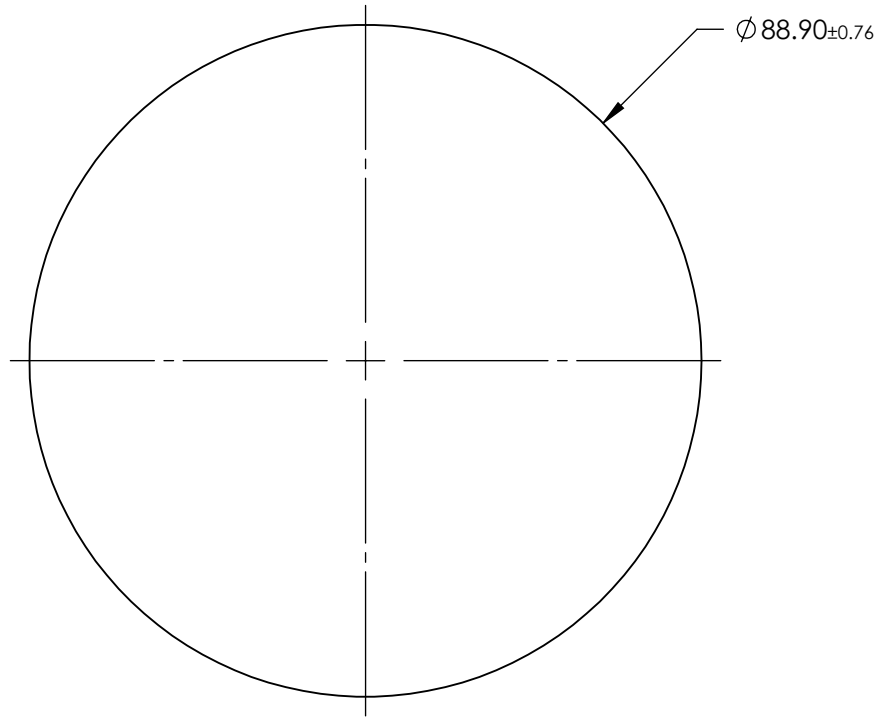
NOTES:

- 1. SUBSTRATE: FLOAT GLASS
- 2. COATING (APPLY ACROSS CLEAR APERTURE)

S1 & S2: BBAR (425-700nm)
 Ra(AVG) ≤ 0.5% @ 425 - 700nm

3. FINE GRIND SURFACE

- 4. ROHS COMPLIANT



**FOR INFORMATION ONLY:
 DO NOT MANUFACTURE
 PARTS TO THIS DRAWING**

SPECIFICATIONS SUBJECT TO CHANGE WITHOUT NOTICE
 DIMENSIONS ARE FOR REFERENCE ONLY

	S1	S2
SHAPE	PLANO	PLANO
SURFACE QUALITY	80-50	80-50
CLEAR APERTURE	$\varnothing 80.01$	$\varnothing 80.01$
BEVEL	PROTECTED AS NEEDED	PROTECTED AS NEEDED



ALL DIMS IN mm

EO® Edmund Optics®

TITLE 88.9mm Dia. x 3mm High Efficiency Window

DWG NO 39286

SHEET 1 OF 1