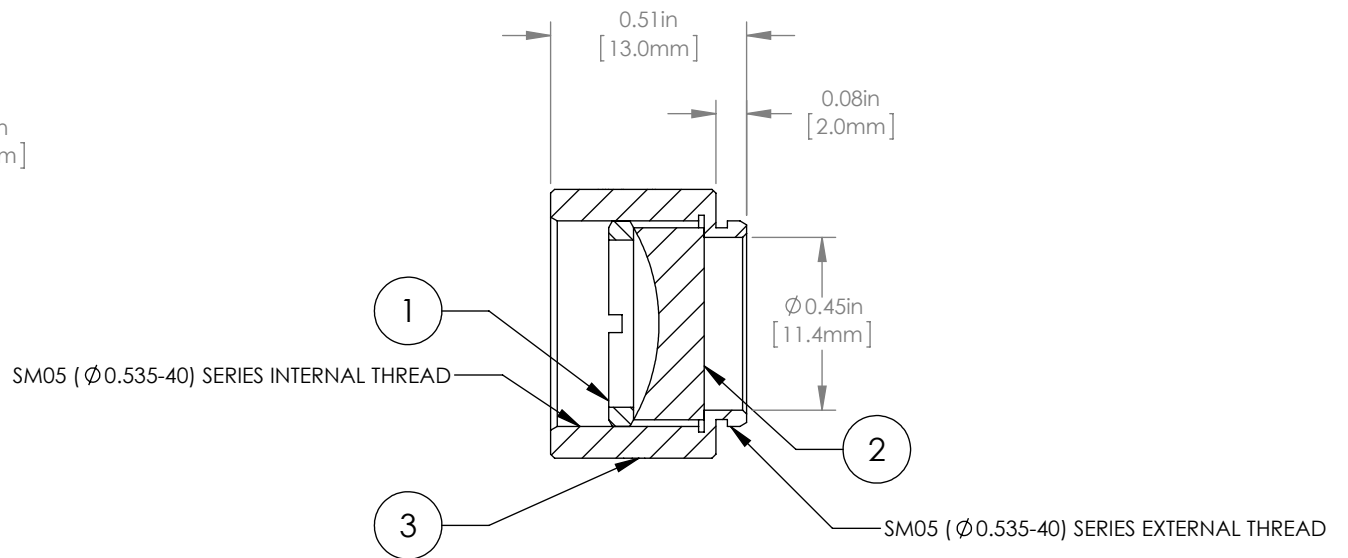
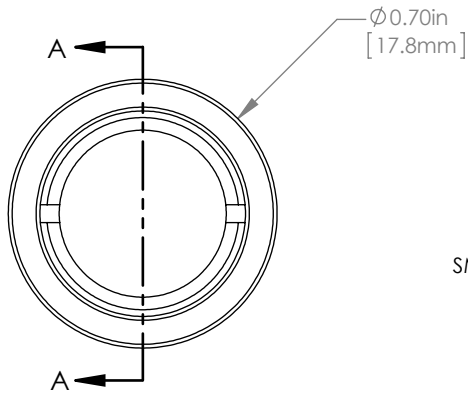
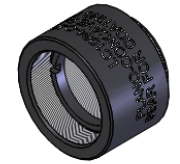


	PART DESCRIPTION	MATERIAL
①	SM05RR	ANODIZED ALUMINUM
②	LC1054-C	N-BK7
③	ENGRAVED HOUSING	ANODIZED ALUMINUM



NOTES/SPECIFICATIONS:

- DESIGN WAVELENGTH: 633nm
- FOCAL LENGTH: $f = -25.0\text{mm} \pm 1\%$
- WORKING DISTANCE (REF): -16.7mm
- CLEAR APERTURE: $> \text{Ø} 11.0\text{mm}$
- SURFACE QUALITY: 40-20 SCRATCH-DIG
- COATING: BBAR $R_{\text{avg}} < 0.5\%$ FROM 1050-1700nm, AOI: 0° , ON OUTER OPTICAL SURFACES

FOR INFORMATION ONLY
NOT FOR MANUFACTURING PURPOSES

DRAWING PROJECTION						THORLABS www.thorlabs.com		
NAME	DATE	Ø 1/2" MOUNTED PLANO-CONCAVE LENS, $f = -25\text{mm}$, -C COAT				MATERIAL SEE TABLE		REV
DRAWN	20/NOV/15							A
APPROVAL	DD	20/NOV/15						
COPYRIGHT © 2015 BY THORLABS						ITEM # LC1054-C-ML		APPROX WEIGHT 5 g
VALUES IN PARENTHESIS ARE CALCULATED AND MAY CONTAIN ROUND OFF ERRORS								