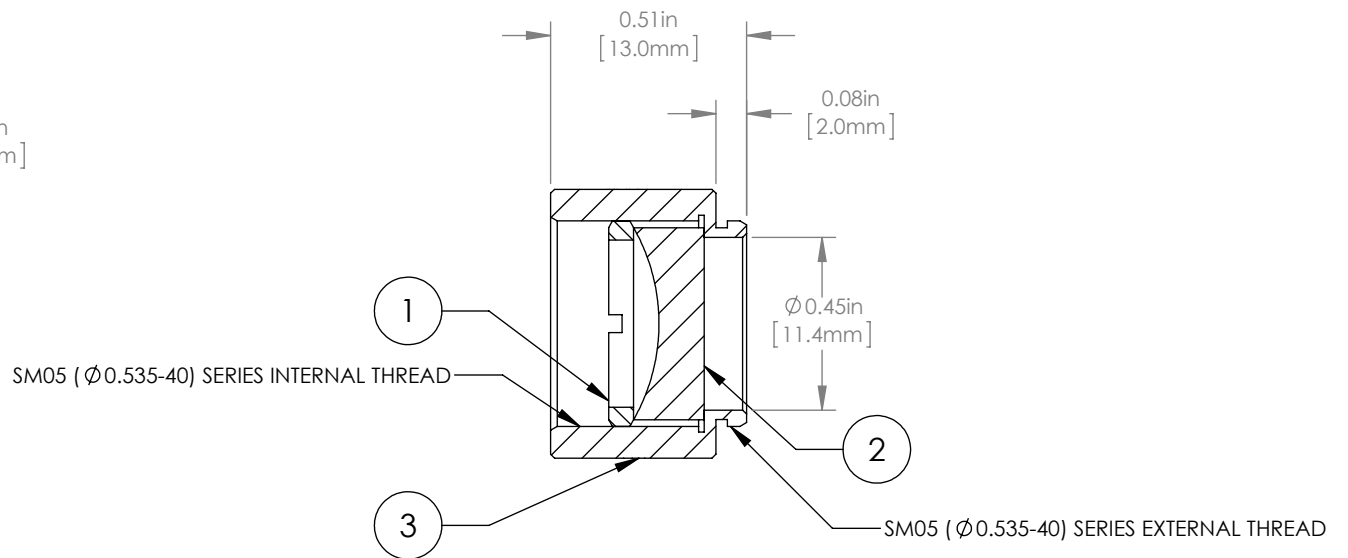
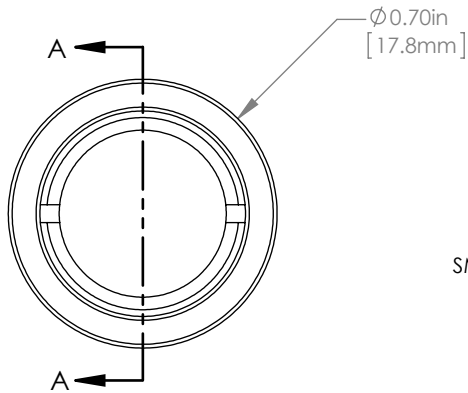
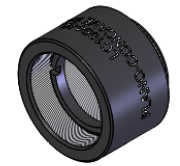


	PART DESCRIPTION	MATERIAL
①	SM05RR	ANODIZED ALUMINUM
②	LC1054	N-BK7
③	ENGRAVED HOUSING	ANODIZED ALUMINUM



NOTES/SPECIFICATIONS:

- DESIGN WAVELENGTH: 633nm
- FOCAL LENGTH: $f=-25.0\text{mm} \pm 1\%$
- WORKING DISTANCE (REF): -16.7mm
- CLEAR APERTURE: $> \phi 11.0\text{mm}$
- SURFACE QUALITY: 40-20 SCRATCH-DIG

FOR INFORMATION ONLY
NOT FOR MANUFACTURING PURPOSES

DRAWING PROJECTION						THORLABS www.thorlabs.com	
NAME	DATE	$\phi 1/2$ " MOUNTED PLANO-CONCAVE LENS, $f=-25\text{mm}$				MATERIAL SEE TABLE REV A	
DRAWN	DATE						
APPROVAL	DATE	ITEM #				APPROX WEIGHT	
<small>COPYRIGHT © 2015 BY THORLABS</small>		LC1054-ML				5 g	
<small>VALUES IN PARENTHESIS ARE CALCULATED AND MAY CONTAIN ROUND OFF ERRORS</small>							