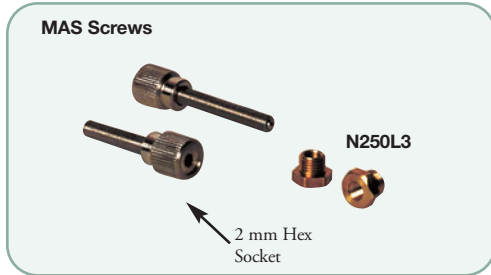
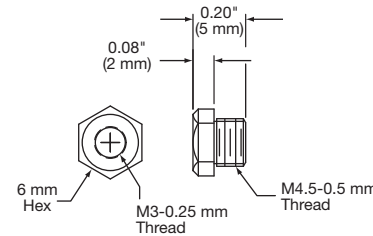


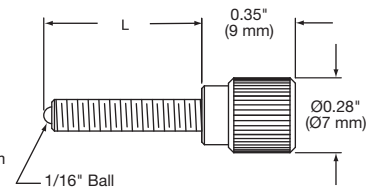
## M3-0.25 mm Ultrafine Adjustment Screws



### ■ Stainless Steel Knob and Screw



### ■ Brass Adjuster Nut



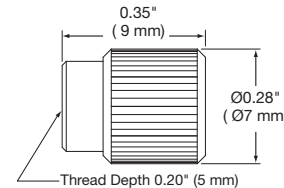
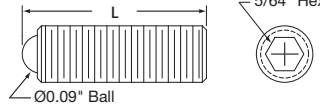
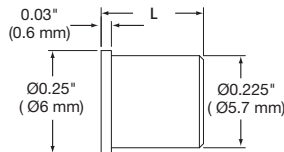
Please refer to our website for complete models and drawings.

ITEM#	\$	£	€	RMB	DESCRIPTION	LENGTH
N250L3	\$ 9.70	£ 6.70	€ 8,70	¥ 82.00	M3-0.25 mm	5 mm
MAS15	\$ 17.20	£ 12.00	€ 15,30	¥ 145.30	M3-0.25 mm	15 mm
MAS20	\$ 18.30	£ 12.70	€ 16,30	¥ 154.60	M3-0.25 mm	20 mm

## #6-80 Fine Hex Adjusters



#6-80 hex adjusters are great for miniature mounts that require fine (0.0125" per revolution) resolution. Mating parts can be made using a tap (ITEM# 99943 featured on page 514) or the F6SSN1 threaded bushing. Also available for use with the #6-80 hex adjusters are removable knobs and vacuum-compatible lock nuts.



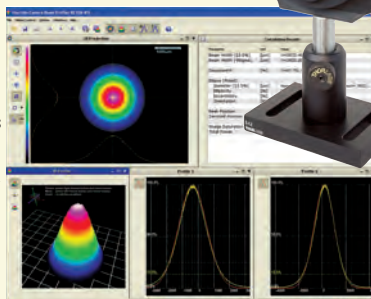
Please refer to our website for complete models and drawings.

ITEM#	\$	£	€	RMB	DESCRIPTION	LENGTH
F6SS045	\$ 7.60	£ 5.25	€ 6,80	¥ 64.20	#6-80 Adjuster Screw	0.45"
F6SS058	\$ 8.60	£ 5.95	€ 7,70	¥ 72.70	#6-80 Adjuster Screw	0.58"
F6SS088	\$ 9.70	£ 6.70	€ 8,70	¥ 82.00	#6-80 Adjuster Screw	0.88"
F6SS113	\$ 10.80	£ 7.50	€ 9,60	¥ 91.20	#6-80 Adjuster Screw	1.13"
F6SSN1	\$ 6.80	£ 4.70	€ 6,10	¥ 57.50	#6-80 Threaded Bushing	0.250"
F6SSN2	\$ 7.00	£ 4.85	€ 6,30	¥ 59.20	#6-80 Threaded Bushing	0.375"
F6SSK1	\$ 6.20	£ 4.30	€ 5,60	¥ 52.40	#6-80 Removable Adjuster Knob	0.35"
LN680	\$ 8.20	£ 5.70	€ 7,30	¥ 69.30	#6-80 Lock Nut	-

## Beam Profilers: Scanning and CCD - See Pages 1318-1322

- Wavelength Range from 190 to 1100 nm
- CW and TTL-Triggered Single Pulse Detection
- High Dynamic Range CCD Camera with High Resolution and Low Noise

Compared to scanning slit profilers, Thorlabs' series of CCD camera-based beam profilers offers true 2D analysis of the beam's power density distribution. This greater detail allows complex mode patterns to be identified while optimizing a laser system.



- UV Through IR Detection with a Si or Ge Sensor
- CW and Pulsed Sources ≥10 Hz
- High Dynamic Range

Thorlabs' Scanning Profiler is a high-precision instrument with a dynamic range of 72 dB that can analyze the power distribution of laser beams with diameters from 10 μm to 9 mm.

