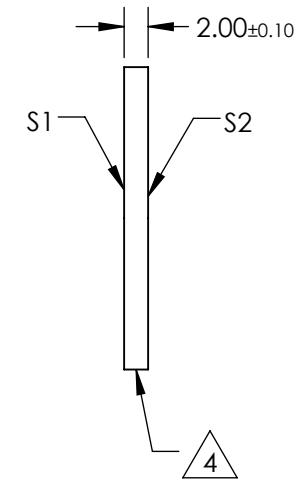
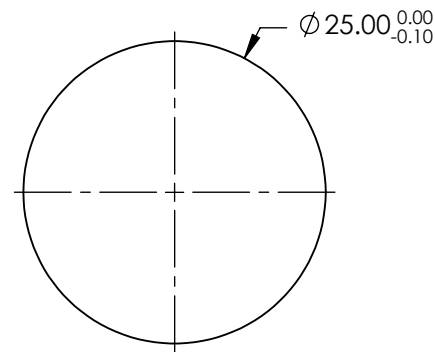
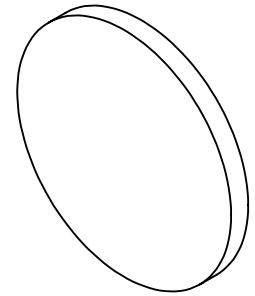


NOTES:

1. SUBSTRATE:  
FUSED SILICA (CORNING 7980)
2. S2 TO BE PARALLEL WITH S1 TO WITHIN <1' ARCMIN
3. COATING (APPLY ACROSS CLEAR APERTURE)  
S1 & S2: R(AVG) ≤0.5% @ 600 - 1050nm
4. FINE GRIND SURFACE
5. ROHS COMPLIANT



**FOR INFORMATION ONLY:  
DO NOT MANUFACTURE  
PARTS TO THIS DRAWING**

SPECIFICATIONS SUBJECT TO CHANGE WITHOUT NOTICE  
DIMENSIONS ARE FOR REFERENCE ONLY

	S1	S2	<b>Edmund Optics®</b>				
SHAPE	PLANO	PLANO					
SURFACE QUALITY	40-20	40-20	TITLE 25mm Dia., 2mm Thick, NIR I Coated, λ/4 Fused Silica Window				
CLEAR APERTURE (mm)	Ø22.50	Ø22.50			DWG NO 18340		
BEVEL	PROTECTIVE AS NEEDED	PROTECTIVE AS NEEDED	SHEET 1 OF 1				
			ALL DIMS IN	mm			